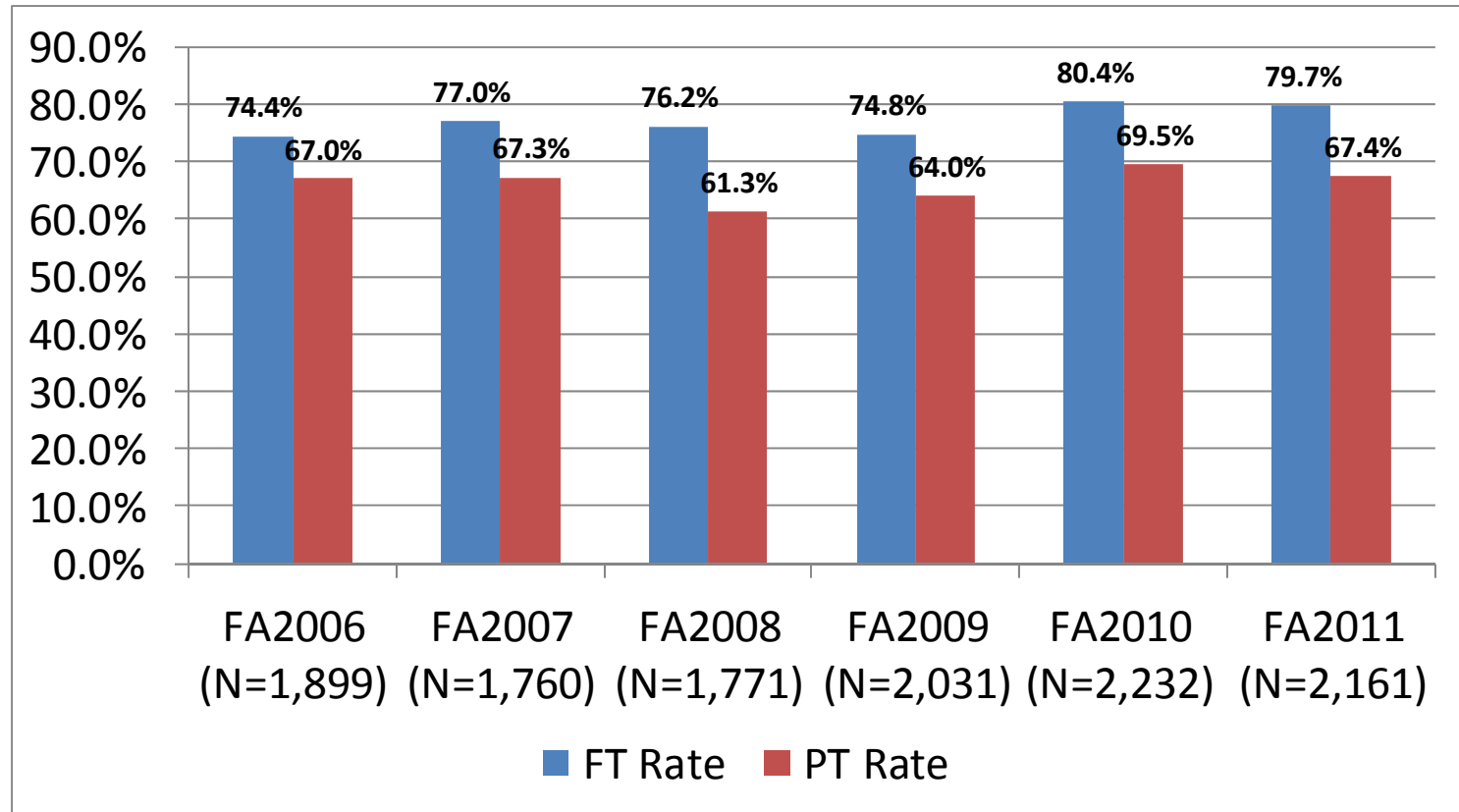


Student Retention

MATC TRENDS: Fall-to-Spring Persistence Rate

First-Time Degree-Seeking Students

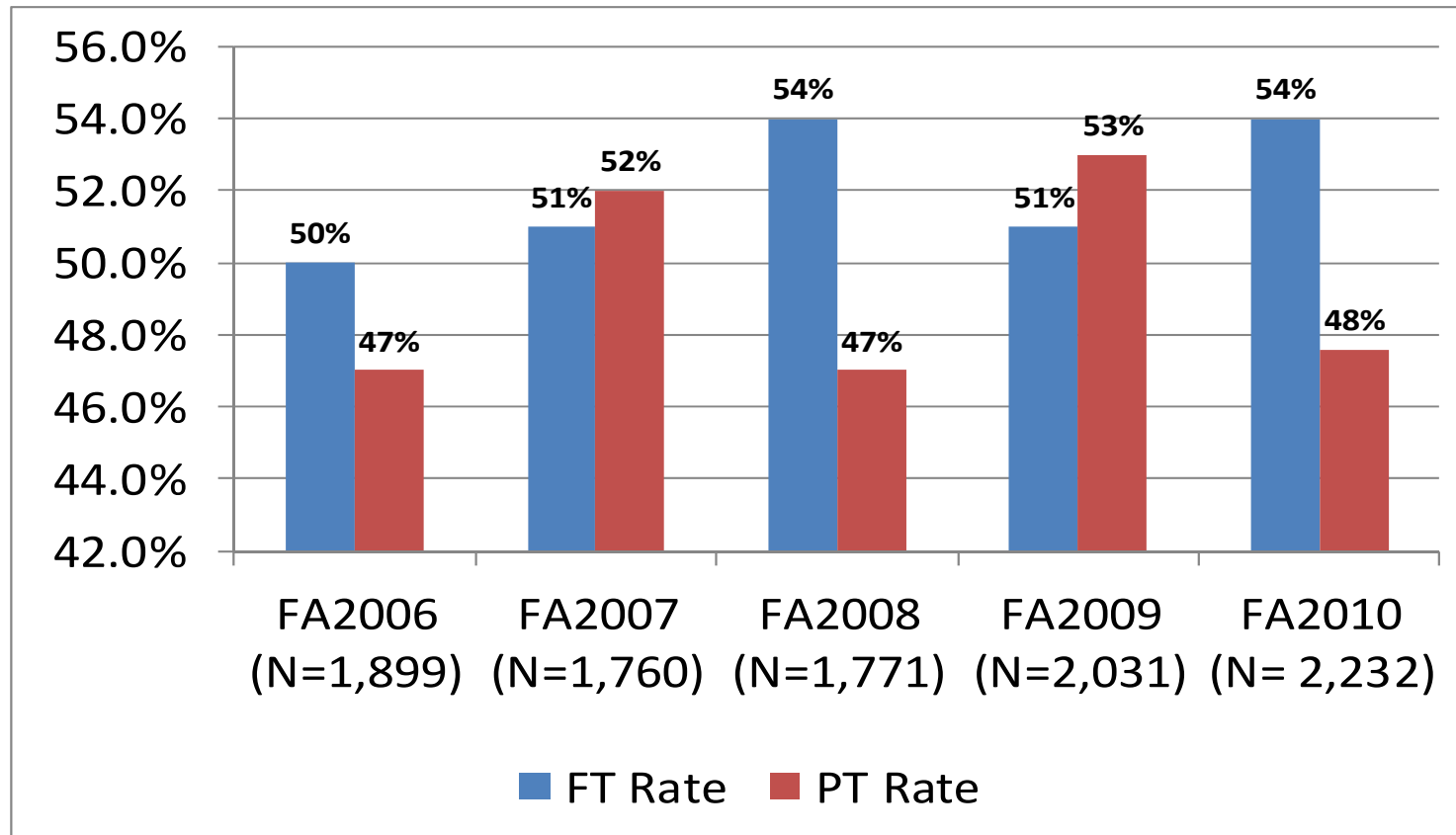


Source: COSMO & SSDW data bases

Note: Persistence data are based on end of the Spring term..Percentages denote the proportion who enrolled for the first time in the fall term and who had re-enrolled in the following spring term: e.g., FA2006= fall term of 2005-2006 academic year, and so on.

MATC TRENDS: Fall-to-Fall Retention Rate

First –Time Degree-Seeking Students

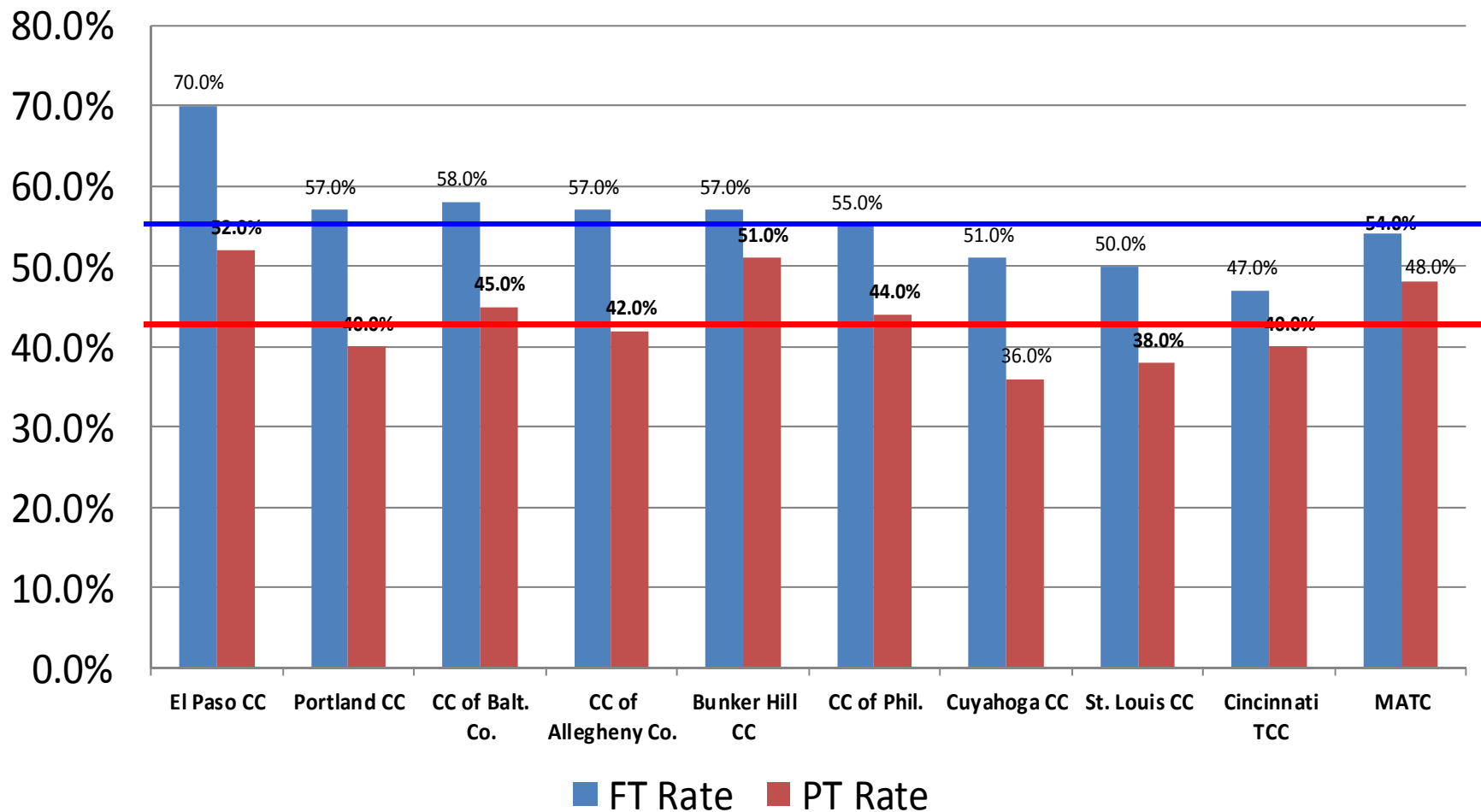


Source: IPEDS & CSRDE

Note: 5th week of fall term used as the base for computing percentages. Percentages denote the proportion who enrolled for the first time in the fall term and who had re-enrolled in the following fall term: e.g., FA2006= fall term of 2005-2006 academic year with re-enrollment in FA2007 and so on. Rates cannot be updated until the spring.

MATC TRENDS: FA2010 Comparative Fall-to-Fall Retention Rate

First-Time Degree-Seeking Students



Source: IPEDS & CSRDE; 5th week of fall term used as the base.

Note: Percentages denote the proportion who enrolled for the first time in the fall term noted below and who had re-enrolled in the following fall term; The horizontal blue line denotes full-time college average (56%), a 1% decline from last year; The horizontal red line denotes part-time college average (44%), a 5% increase. The colleges are ordered by their previous year's full-time rate from left (highest) to right (lowest), so that MATC leap-frogged past three colleges over the past year.