

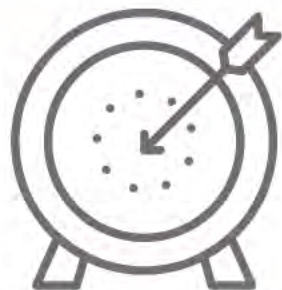
# TRANSFER

2019-2020

A COMPLETE GUIDE TO START YOUR BACHELOR'S DEGREE AT MATC



DON'T MISS MATC'S TRANSFER  
DAYS EVERY FALL & SPRING!



WHEN WE SAID TRANSFER  
OPPORTUNITIES ARE  
**FOR ALL STUDENTS,**  
WE INCLUDED  
**YOU!**

# TABLE OF CONTENTS

Your MATC Transfer Contacts . . . . .	3
Making News . . . . .	4
Tips From MATC Student, Eunice Perez . . . . .	6
Why Is a Bachelor's Degree Important? . . . . .	7
MATC's Affordable Education . . . . .	8
Financial Aid FAQ and Information . . . . .	10

## EXPLORE Education and Career Options

Advantages of Starting at MATC . . . . .	14
What Is a Bachelor's Degree? . . . . .	15
Salary Report . . . . .	17
Top Colleges in Wisconsin . . . . .	18
MATC Advisors, Here to Help . . . . .	19

## DISCOVER MATC's Transfer Agreements

What Is an Articulation Agreement? . . . . .	20
Definitions of Transfer Agreements . . . . .	21
Guaranteed Admission . . . . .	23
Articulation Agreements Streamline Bachelor's Degree Pathway . . . . .	24
Quick Facts Comparison Chart . . . . .	Insert
Websites to Check Out . . . . .	25

## PLAN A Successful Transfer

Start Planning Today . . . . .	27
Step 1: Assess Yourself . . . . .	28
Step 2: Make a List of Occupations to Explore . . . . .	29
Step 3: Conduct Informational Interviews . . . . .	29
Step 4: Make Your Career Choice . . . . .	30
Step 5: Identify Your Goals . . . . .	30
Step 6: Write a Career Action Plan . . . . .	31

## PARTNERS

Consider Your Options . . . . .	32
Four-Year Campus Admission Contacts . . . . .	33
Maps of MATC's Partners . . . . .	34
One Final Request: Your MATC Transcript . . . . .	37
Participating Schools Share Their Stories . . . . .	38

# YOUR MATC TRANSFER CONTACTS



General Information: 414-297-6836  
Email: [transfer@matc.edu](mailto:transfer@matc.edu)  
Contact Names: Jonathan Feld: [feldj@matc.edu](mailto:feldj@matc.edu)  
Margie Kleineider: [kleineim@matc.edu](mailto:kleineim@matc.edu)

## STUDENT RESOURCES

### Advising and Counseling

Downtown Milwaukee Campus, Student Center (S Building),  
Room S203

414-297-6267

Monday – Thursday: 7:45 a.m.-6 p.m.

Friday: 7:45 a.m.-4 p.m.

### Financial Aid

Downtown Milwaukee Campus, Student Center (S Building),  
Room S201

414-297-6282

Monday – Thursday: 7:45 a.m.-6 p.m.

Friday: 7:45 a.m.-4 p.m.

## Welcome Centers

Downtown Milwaukee Campus

Monday – Thursday: 7:45 a.m.-6 p.m.

Friday: 7:45 a.m.-4 p.m.

Mequon Campus

Monday, Wednesday, Friday: 7:45 a.m.-4 p.m.

Tuesday, Thursday: 7:45 a.m.-6 p.m.

Oak Creek Campus

Monday, Wednesday, Friday: 7:45 a.m.-4 p.m.

Tuesday, Thursday: 7:45 a.m.-6 p.m.

West Allis Campus

Monday, Wednesday, Friday: 7:45 a.m.-4 p.m.

Tuesday, Thursday: 7:45 a.m.-6 p.m.

## Lakeland University, MATC Announce Scholarship Connecting High School Promise Students With Four-Year Degrees

 MILWAUKEE AREA *Technical College*



Lakeland University and Milwaukee Area Technical College have created a new partnership that will expand MATC's Promise program and provide a pathway to a bachelor's degree for economically disadvantaged students in the Milwaukee area who never thought that goal was possible.

Lakeland will establish a significant scholarship fund that will extend the Promise to MATC direct-from-high school Promise-eligible students who earn their associate degrees and plan to attend Lakeland classes as full-time students. For many of the graduates, the scholarship will cover all tuition after federal and state financial grant aid has been applied.

If the scholarship does not cover all tuition, Lakeland will assist students in securing paid experiences through its Cooperative Education program that will keep the cost manageable.

*"The spirit of MATC's Promise is very exciting to us. It ties to Lakeland's mission of using the liberal arts and experiential learning to educate people of diverse backgrounds; and prepares them to think critically, communicate effectively, succeed professionally; and lead ethical, purposeful and fulfilling lives."*

*Dr. David Black,  
Lakeland University President*

## New Partner: Columbia College Chicago

Graduates of the following MATC programs have new options for bachelor's degrees by transferring to Columbia College Chicago:



MATC's **TV and Video Production** graduates can earn a Bachelor of Arts in Television, with concentrations in:

- Production/Direction
- Internet/Mobile
- Writing/Producing

**Photography** graduates can pursue a Bachelor of Arts in Photography with concentrations in:

- Fine Art Photography
- Commercial Photography
- Fashion Photography

**Graphic Design** graduates can earn a Bachelor of Fine Arts degree in various majors:

- Advertising Art Direction
- Graphic Design
- Illustration
- Interior Architecture

For admission requirements, go to [colum.edu/admissions/requirements/transfer](http://colum.edu/admissions/requirements/transfer).

**Milwaukee Institute of Art & Design** recently launched the MIAD Innovation Center. It combines technology and creativity to design solutions, creating a hub where students apply technology in unrivaled ways on projects for businesses, nonprofit organizations and entrepreneurs.

**Carroll University** is leading efforts to shape future data science and analytics education at liberal arts institutions. Carroll was awarded a \$100,000 grant by the National Science Foundation (NSF) to explore, along with 10 other liberal arts schools, how to best teach essential skills in data science and analytics.

**Wisconsin Lutheran College** (WLC) recently expanded its dedicated science building, created a sports performance and training center, and enlarged the college's fitness center thanks to a \$5.2 million anonymous gift.

## New Partner: Purdue University Global

The Wisconsin College Technical System (WTCS) and Purdue University Global recently signed an **articulation agreement for Nursing**. This State agreement allows MATC students the opportunity to earn the RN-BSN degree online.



Purdue University Global offers 100 percent of the coursework online and the ability to complete required clinical practice at a time and location of choice.

In addition, Purdue University Global offers:

- 75 percent of transfer credits toward the RN-BSN degree
- Specialized nursing care options (hospice, palliative, transcultural, holistic, etc.)
- Flexibility to set personal schedules

For more information, visit [purdueglobal.edu/transfer-students/](http://purdueglobal.edu/transfer-students/).

For current academic year, WLC had its highest-ever first year enrollment - a 26 percent increase compared with 2017-18. During the past 10 years, WLC's enrollment has grown by more than 70 percent.

**Marian University** launched a three-year undergraduate (BSN) nursing program in fall 2019 to address the impending nursing shortage. The program provides students high-quality instruction and the ability to earn their degree more quickly.

**Concordia University Wisconsin** is leading research that holds promise for treating dementia in women. Dr. Daniel Sem of CUW, along with Dr. Karyn Frick of the **University of Wisconsin-Milwaukee** and Dr. William Donaldson of **Marquette University**, co-authored two published articles and formed a startup company, Estrigenix Therapeutics Inc.

## FLEXIBLE FORMATS

You choose each week how you want to attend classes.



Lakeland University's innovative partnership with **Milwaukee Area Technical College** provides several unique higher-education options for students.

- ✓ **GUARANTEED ADMISSION**
- ✓ **FREE** application
- ✓ Affordable, flexible college degree option **CLOSE-TO-HOME**.
- ✓ Earn your **BACHELOR'S DEGREE** in as little as **18 MONTHS**.
- ✓ **EARN ACADEMIC CREDIT** for current or future **WORK PROJECTS** without stepping foot in a classroom!
- ✓ Financial aid, scholarships and discounts are available.

**Lakeland University  
Milwaukee Center**

414-476-6565  
milwaukee@lakeland.edu

# 72

**UP TO 72 TRANSFER CREDITS ACCEPTED**

### MY MATC TRANSFER EXPERIENCE

#### Top tip:

College is doable! Always remember why you're in school and you will be successful.



## MATC STUDENT EUNICE PEREZ Four-Year College Transfer Program Puts Her on Path to Success

Eunice Perez graduated from Riverside University High School in Milwaukee and is the first person in her family to attend college.

"When I was in high school, the thought of going to college scared me. I didn't know what career I wanted," she said. "After my positive experience during my first year at MATC, I decided I really liked college and now I want to attend a four-year university after I graduate."

Perez is in MATC's Associate in Arts program, which provides the first two years of bachelor's degree credit courses that will transfer to four-year colleges and universities. She has researched many universities online and plans to attend several open houses before choosing the four-year school. Although she has not pinpointed what bachelor's degree she will pursue, she said, "I know I want to give back to my community and help those in need."

# Why Is a Bachelor's Degree Important?

When high school students are choosing what to do after graduation, or when working adults seek new career opportunities, they might wonder just how important earning a bachelor's degree is. The answer is, much more than you might think. Earning a bachelor's degree is important because it will help you to earn more money.

## It's just that simple!

College graduates typically earn higher salaries than those without college degrees, partly because graduates have access to better paying positions. However, workers with a bachelor's degree tend to earn more at the SAME positions than workers without a degree because employers view those workers as more valuable or more skilled than those without degrees.

According to the College Board, the average college graduate will earn 61 percent more over a 40-year working life span than the average high school graduate.\* Starting at a two-year college, like MATC, will jump start that education with minimal impact on the personal finances.

Many young adults consider bypassing college because they have to pay for it themselves and may have to go into debt in order to enroll. There are multiple options for offsetting the cost of college, such as grants, loans, scholarships and work-study programs.

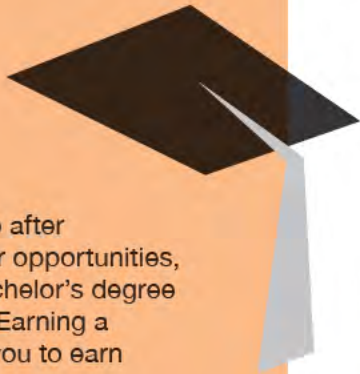
Earning your bachelor's degree is important because it will bring:

- ADVANTAGES WHEN JOB HUNTING
- JOB SECURITY
- GOOD SALARY

Accessing a high-quality degree is not just an important step in your chosen educational path ... it is essential to your success!

## Again, it's just that simple!

(\*Source: College Board study, "Education Pays: The Benefits of Higher Education for Individuals and Society")



# FINISH AS A PHOENIX

ONLINE OR ON-CAMPUS.

## Thinking About Your Bachelor's Degree?

UW-Green Bay is ready to help MATC graduates take the next step. We offer ONLINE degrees in:

Accounting

Business

Psychology

Health Information  
Management Technology

Nursing

Public Administration

Organizational Leadership



Transfer as a junior  
with only 60 credits to go!

— if you're an MATC graduate who  
pursues Organizational Leadership



Arlene Torres  
Admissions Advisor



Meet with an advisor from UW-Green Bay right here at MATC!

Learn more: 414-333-2895 | [www.uwgb.edu/online](http://www.uwgb.edu/online)



# MATC'S AFFORDABLE COLLEGE EDUCATION FITS COMMUNITY'S NEEDS

MATC offers the community a range of educational opportunities. For example, students can complete the **first half of a bachelor's degree** through MATC's School of Liberal Arts and Sciences associate degree programs; credits earned in MATC's 200-level courses are accepted at public and private four-year schools throughout the state and beyond.

Also, agreements with more than 35 four-year colleges and universities provide transfer of selected **associate degree (100-level) courses and programs** offered through MATC's Schools of Business, Health Sciences, Media and Creative Arts, and Technology and Applied Sciences. Most associate degrees can be completed within two years of full-time study.

Interested in **apprenticeship programs**? Apprentices learn a skilled trade through on-the-job experiences and their classroom instruction at MATC. Through these "earn and learn" opportunities, an apprentice earns wages from the employer.

MATC also offers technical diplomas and certificates. **Technical diploma programs** provide specialized, hands-on training to prepare you for a career. **Certificates** are targeted, short-term (generally one-semester) programs designed to update one's job skills. Visit [matc.edu](http://matc.edu) for the complete list of academic programs.





## TUITION FOR **(ONE YEAR)**

**\$5,934** MATC (4-YR. COLLEGE TRANSFER PROGRAM)

**\$7,389** UW SYSTEM (4-YR. INSTITUTION, MINIMUM)

**\$30,180** PRIVATE & OUT-OF-STATE PUBLIC  
(4-YR. INSTITUTION, 2017-18 AVERAGE TUITION)

(2018-19; ONE YEAR, FULL TIME; 30 CREDITS; TUITION FOR WISCONSIN RESIDENT. SOURCE: WISCONSIN TECHNICAL COLLEGE SYSTEM)



**MPath Online Undergraduate Programs:**  
Accelerated degree options to help you write your next chapter and accommodate your current one.

The ultimate **education-work-life balance**

- 100% online, 7-week format
- 6 possible start times each year
- Courses offered in a flexible format
- Transfer up to 90 credits
- Credit offered for military experience and prior learning

- MPath Undergraduate Programs offer:**
- The creation of a custom completion plan
  - The ability to pause and progress as needed
  - Engaging learning experiences based on individual needs
  - Online communication with faculty to help build a professional network

**10%**  
transfer discount  
to MATC  
students

Apply online today at  
**[marianuniversity.edu/apply](http://marianuniversity.edu/apply)**

**MARIAN UNIVERSITY**

OFFICE OF ADULT AND ONLINE STUDIES | 45 S. National Ave. | Fond du Lac, WI 54935  
adult\_online@marianuniversity.edu | 920.923.8726 | 1.800.2.MARIAN ext. 8726



# FOCUSED ON YOUR SUCCESS



CARDINAL  
STRITCH  
UNIVERSITY

**Cardinal Stritch University is an easy transition from MATC with:**

One-on-one support and guidance.

Answer your questions about the transfer process.

Maximize existing credits.

**Scholarships Available to Transfer Students!**

### Bachelor Degree Highlights

Business Administration  
Elementary Education  
Human Services Management  
Management  
Nursing

### All online Bachelor degree completion programs

RN to BSN  
Respiratory Therapy

*Stritch offers over 60 undergraduate and graduate degree programs.*

[www.stitch.edu/MATC\\_Transfer](http://www.stitch.edu/MATC_Transfer)

## Financial Aid FAQ



We know that financial aid can be complicated. Below are the most common questions MATC students have regarding financial aid and transferring, with answers provided by Al Pinckney, MATC vice president (pictured); Christine Zollicoffer, interim Financial Aid director; and Jeannie Bynum, Financial Aid operations and compliance director.

**Q.** When should I apply for financial aid at the four-year school?

**A.** Apply as soon as the FAFSA for that year is available. The FAFSA will be available beginning October 1, 2019 for Fall 2020.

**Q.** How do I transfer my financial aid to the four-year school?

**A.** Add the new school's code on your FAFSA under Add School. You may add up to six schools.

**Q.** Is MATC's 150% rule the same for all colleges?

**A.** The 150% policy can vary by school. You will need to check the policy at the four-year school.

**Q.** Will I be eligible for more funds?

**A.** Eligibility is determined in part by Cost of Attendance, so you may be eligible for additional funding. To find out, check with the Financial Aid office at the four-year school.

# FAFSA® Recent Changes

Starting with the 2017-18 FAFSA, the following changes were put in place:

## Change #1:

**You can now submit the FAFSA as early as October 1**, rather than January 1. This isn't the deadline, but it's best to get the form in early because some aid awards are distributed on a first-come, first-served basis.



## Change #2:

**You now report earlier income information.** Students are required to report income information from an earlier tax year. For example, on the 2019-20 FAFSA, students (and parents, as appropriate) must report their 2017 income information, rather than their 2018 income information.



# CHECK IT OUT

## See [financialaidtoolkit.ed.gov](https://financialaidtoolkit.ed.gov)

to learn about any changes that might affect your financial aid application.

*IMPORTANT TO REMEMBER: The U.S. Department of Education offers FAFSA as a FREE resource to students – so don't pay for a service that helps you fill out the form.*



**Resources for MATC students.** You will find lots of information about the financial aid process at [matc.edu](https://matc.edu). Forms, important dates and more can be found online. Or stop by the Financial Aid Office on each campus.



# FINDING WAYS TO PAY FOR COLLEGE

The financial aid system can be confusing, so don't feel bad if you're a little unclear about how it all works. To start, it's important to fill out the **Free Application for Federal Student Aid (FAFSA)** at [fafsa.gov](https://fafsa.gov).

You may be eligible for scholarships and grants (which you don't have to pay back), and loans (which you do have to pay back).

One resource for more details about FAFSA, grants, scholarships and loans is [studentaid.ed.gov](https://studentaid.ed.gov).

- **GRANTS.** Colleges, states and the federal government give out grants, which don't need to be repaid. Most are awarded based on your financial need, and determined by the income you reported on the FAFSA. The U.S. Department of Education offers a variety of federal grants to students attending four-year colleges or universities, community colleges and technical colleges such as:

- Federal Pell Grants
- Federal Supplemental Educational Opportunity Grants (FSEOG)
- Teacher Education Assistance for College and Higher Education (TEACH) Grants

## - PRIVATE SCHOLARSHIPS

There are thousands of private scholarships out there from companies, nonprofits and community groups. You might be able to get a scholarship for being a good student, a great athlete, or because your parent works for a company that offers scholarships to employees' children. These are just a few examples of potential scholarships.

## - VETERANS SERVICE ORGANIZATION SCHOLARSHIPS

The following organizations offer scholarships primarily to active duty military, veterans and their families. Further information is available at the websites listed below. Before you can receive these funds, you must fill out the FAFSA.

- American Legion: [legion.org/scholarships](https://legion.org/scholarships)
- AMVETS: [amvets.org/scholarships](https://amvets.org/scholarships)
- Paralyzed Veterans of America: [pva.org/membership/scholarship-program](https://pva.org/membership/scholarship-program)
- Veterans of Foreign Wars: [vfw.org/assistance/student-veterans-support](https://vfw.org/assistance/student-veterans-support)
- Iraq and Afghanistan Service Grants

If your parent or guardian died as a result of military service in Iraq or Afghanistan after the events of Sept. 11, 2001, you may be eligible for U.S. Department of Education (ED) grant funds. To determine your eligibility, visit [studentaid.ed.gov/sa/types/grants-scholarships/military](https://studentaid.ed.gov/sa/types/grants-scholarships/military)

- **WORK-STUDY JOBS.** These are part-time jobs on campus for eligible students, depending on their finances and the funding available at the school. You need to have submitted the FAFSA in order to qualify. Work-study jobs pay students directly, at least once a month. Undergrads earn hourly wages, but the amount you earn can't exceed your work-study award for the year. The amount should also be included in your financial aid award letter sent by the school.

- **ASK THE COLLEGE FOR MORE MONEY.** Yes, you can request additional financial aid. Experts suggest writing a formal appeal letter and then following up with a phone call. You could explain if your family has other expenses, like medical bills, that aren't already taken into consideration. Also mention if financial circumstances have changed in the past year because the FAFSA is based on income from the prior year.

- **TAKE OUT LOANS.** Loans should be your last resort, but they're often inevitable if scholarships, grants and savings don't cover the entire bill. **The typical family uses loans to cover 20 percent of the cost of college.** Check into borrowing money from the federal government before turning to a private lender because federal loans typically offer lower interest rates and more borrower protections. Note: You won't be able to get a federal student loan if you didn't submit the FAFSA form.

*(Information excerpted from CNNMoney New York)*

YOU HAVE A GREAT START.

**FINISH  
STRONG.**

TRANSFER TO MARQUETTE.

At Marquette, you'll get the attention, service and experience needed to achieve your goals and complete your degree. Marquette offers nationally ranked programs and a supportive campus community with personalized attention that starts from the moment you contact us.

Our transfer specialist Malik will personally answer your questions, help you with the transfer process and schedule a visit. Transfer to Marquette and finish strong. Here, you will learn to Be The Difference.

Malik Farr: 414.288.1614  
malik.farr@marquette.edu

**Apply today. Start next semester.**

[marquette.edu/transfer](http://marquette.edu/transfer)



**BE THE  
DIFFERENCE.**

# EXPLORE

The benefits of starting at MATC and completing an associate degree are many! One is that your degree completes the required freshman and sophomore classes at a four-year institution. MATC students can easily transfer and enroll with a junior status.

Other advantages to earning your associate degree at MATC:

- **Cost savings** – You can take four semesters (two years) of classes at significantly lower tuition than the cost of four-year colleges and universities
- **Smaller class sizes** – Less feeling like a number; more attention when you need it
- **Four campus locations** – Helps you balance work and family obligations while still being close to home

## 20.6%

OF MATC **ASSOCIATE DEGREE**  
STUDENTS TRANSFER

TOP REASONS TO START AT MATC:

- ✓ Save money
- ✓ Smaller classes
- ✓ Convenient locations



## What Is a Bachelor's Degree?

A bachelor's degree is a four-year degree, meaning it typically takes four years of full-time study to complete.

The bachelor's degree remains the standard for entry into many professional careers. A bachelor's is a postsecondary (meaning after high school) undergraduate degree. Historically, the term "college degree" meant a bachelor's four-year degree. Regionally accredited liberal arts colleges award most of the bachelor's degrees in the United States.

Bachelor's degrees are also **sometimes called baccalaureate** degrees. Students pursuing their bachelor's are referred to as undergrads, short for undergraduates, because they have not graduated yet with their four-year degree.

In most cases, you cannot attend a professional graduate school in law, medicine or teacher education unless you hold a bachelor's degree. That means you will almost always need a bachelor's before enrolling in a master's program to open the door to even more career opportunities.

**What is the difference between a B.A. and a B.S.?** Academically, a Bachelor of Arts (B.A.) degree and a Bachelor of Science (B.S.) degree are equally valued. Both offer you the opportunity to continue your education at the master's degree level if you wish to pursue a graduate degree.

(continues on next page)



## Be a Pioneer.

Discover Carroll University

-   
95+ undergraduate areas of study & 11 graduate programs
-   
Transfer student merit-based scholarships
-   
Hassle-free transfer
-   
50+ student-led organizations
-   
98% of students receive financial aid
-   
22 teams compete in the College Conference of Illinois and Wisconsin
-   
Articulation agreements with MATC programs
-   
1-on-1 guidance from an admission counselor

**CARROLL UNIVERSITY**  


First. Foremost. Forward

# EARN YOUR DEGREE **LOCALLY** AT **UPPER IOWA UNIVERSITY**

# Milwaukee

## Tuition grants available for MATC college students transferring to UIU

- Flexible 8-week classes that fit your schedule
- Easy transfer of up to 90 college credits
- Social work certification classes available

**REGISTER SOON!**  
Classes start October 28,  
January 13 and March 16



**UPPER IOWA**  
UNIVERSITY

MILWAUKEE

EDUCATION BUILT FOR LIFE

CLASSROOM ONLINE SELF-PACED

Located across from State Fair Park  
620 S. 76th Street, Milwaukee, WI  
414.475.4848  
milwaukee@uiu.edu

**UIU.EDU/MWKE-LEARN**

# EXPLORE

**Bachelor of Science** degree programs often place less emphasis on the liberal arts education and more emphasis on science, mathematics and the major field of study.

### Examples of Bachelor of Science majors:

Biology | Computer Science | Engineering | Nursing

**Bachelor of Arts** degree programs require coursework in several disciplines, including humanities, social sciences, natural sciences, mathematics, foreign language and fine arts.

### Examples of Bachelor of Arts majors:

History | Journalism | International Studies | Psychology

**Bachelor of Fine Arts (B.F.A.)** is the standard undergraduate degree for students seeking a professional education in the visual or performing arts. A Bachelor of Fine Arts degree will often require an area of specialty such as acting, computer animation, creative writing, dance, film production, graphic design, interior design, music, painting, photography, sculpture, stage management, television production or visual arts.

You will complete 120 semester credits or more, which is around 40 college courses, to earn your bachelor's degree.



Earn the 64 "blue" credits at MATC!



# Salary Report

It's good to know your hard work at college will be worth it – on average, a bachelor's degree leads to bigger paychecks! Americans with a bachelor's degree earn a **weekly average of \$1,198**. That's higher than the median weekly earnings for workers at lower education levels, \$860. You can find details on a wide range of careers and salaries at [www.bls.gov](http://www.bls.gov).

## AVERAGE SALARY BY CATEGORY FOR BACHELOR'S DEGREE:

Engineering	\$66,521
Computer Science	\$66,005
Math and Sciences	\$61,867
Business/Management	\$56,720
Social Sciences	\$56,689
Humanities	\$56,688
Agriculture and Natural Resources	\$53,565
Communications	\$51,448

(Winter 2018 Salary Survey, National Association of Colleges and Employers)

Two occupations that have the **highest number of job openings** in this country are computer and information technology occupations and civil engineering.

**Computer and Information Technology:** Employment for workers in computer and IT occupations is projected to **grow 13 percent** from 2016 to 2026, adding about 546,100 new jobs in the U.S. The median annual wage for these occupations was \$82,860 in 2016.

**Civil Engineers:** Civil engineers design, construct, supervise, operate and maintain infrastructure projects and systems, including roads, bridges, commercial buildings and water treatment facilities. Employment of civil engineers is estimated to **grow 11 percent** from 2016 to 2026, adding about 303,500 new jobs in the U.S. The median annual wage for civil engineers was \$83,540 in 2016.

## More TOP JOBS in Wisconsin

Visit [worknet.wisconsin.gov](http://worknet.wisconsin.gov) for the state's high-growth occupations.

### Some of the top ones currently include:

- ▲ Nurses
- ▲ Operations Managers
- ▲ Accountants and Auditors
- ▲ Market Research Analysts
- ▲ Software Developers

**AVERAGE EARNINGS FOR WORKERS WITH BACHELOR'S DEGREES = \$62,296 per year**

Americans with bachelor's degrees earn \$14,400 more a year than those with less education.

The unemployment rate for Americans with a bachelor's degree is 2.2%.

# EXPLORE



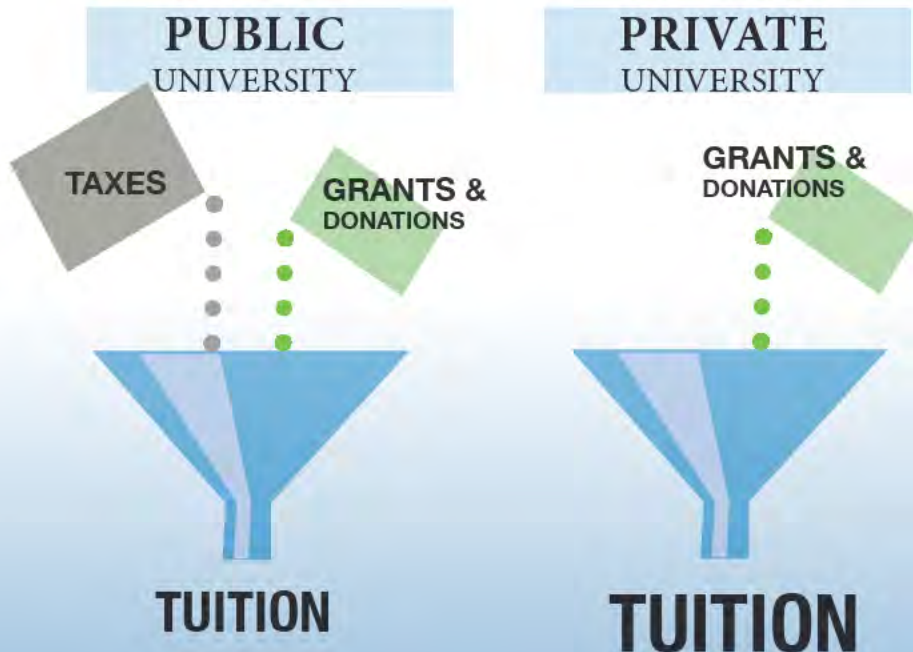
## Top Colleges in Wisconsin

Several top colleges and universities in Wisconsin are located in Milwaukee.

Dozens of large research universities, midsize colleges and small liberal arts colleges also are located throughout the state in cities such as Madison, La Crosse, Kenosha, Green Bay and Oshkosh.

One place to find information on rankings for top colleges and universities is the **U.S. News & World Report** website: [usnews.com/best-colleges/wi](https://usnews.com/best-colleges/wi).

## Differences Between How Public and Private Colleges and Universities Are Funded



**UNIVERSITY OF WISCONSIN  
PLATTEVILLE**

## TAKE THE NEXT STEP TOWARDS YOUR BRIGHTEST FUTURE

### HERE ARE A FEW REASONS TO CONSIDER UW-PLATTEVILLE

- A wide variety of undergraduate and graduate programs
- On-campus, hybrid, and online formats
- Scholarship opportunities for new transfer students
- A transfer student experience that focuses on your success

Ready to see why UW-Platteville should be your first choice to continue your education?

Go to [uwplatt.edu/transfer](https://uwplatt.edu/transfer) to find detailed information about how your degree transfers to UW-Platteville, or schedule a visit to meet with a transfer advisor and talk with an academic representative from your area of interest.

608.342.1125 | 877.UWPLATT  
ADMIT@UWPLATT.EDU | UWPLATT.EDU

## Here to Help

### Keep in touch with your MATC advisor for a smooth transfer

MATC has advisors on each campus who help students identify the pathway that will fit their goals. “There are several ways advisors can help students prepare for their transfer, such as guiding their selection of MATC courses and helping them understand the transfer process,” said Janay Alston, director of Counseling and Advising.

#### Discuss with your academic advisor which courses will work best for your major and transfer destination.

Alston tells students that one of the benefits to earning an associate degree and then transferring to complete a bachelor’s degree is that, as an MATC graduate, you’ll have a college credential on your résumé.

Top tips:

- **Research your career choice**, including what college credential is required and the typical salary range
- **Research the four-year schools** to know the costs and admission requirements
- **Set short-term goals** of what you need to accomplish throughout the academic year to help stay on track
- **Keep in contact** with your MATC advisor and the four-year school to ensure you are selecting appropriate MATC courses

#### Did you know?

MATC’s Multicultural Student Services at the Downtown Milwaukee Campus, Main Building, Room M238, includes offices for African-American Student Services, American Indian Student Services, Asian American Student Services and Hispanic Student Services. Call 414-297-6968 for more information.



“After you transfer, your new school will benefit from the knowledge, wisdom and leadership you bring as an MATC graduate!”

MATC’s Director of Counseling and Advising Janay Alston

# DISCOVER

What is an MATC articulation agreement? Articulation agreements, also called transfer agreements, are designed for seamless transfer of MATC program courses into a four-year college or university program.

**When you meet the requirements**, the credits you earn at MATC are guaranteed to transfer and apply to your bachelor's degree program. The advantage of a transfer agreement with a four-year institution is that **you will not lose credits or duplicate courses**. These agreements may contain course-to-course equivalencies, while others provide for a total program transfer.

**Important: To optimize your credit transfer**, it is highly recommended that you talk to an admissions counselor or credit transfer advisor while planning your credit transfer.

# 1,460

COMMUNITY (**TWO-YEAR**) COLLEGES IN THE U.S.



**7 MILLION STUDENTS** ATTEND 2-YEAR INSTITUTIONS IN THE U.S.

**913,000 ASSOCIATE DEGREES** AWARDED IN 2018-19

**1.8 MILLION BACHELOR'S DEGREES** AWARDED IN 2018-19

(Source: National Center for Education Statistics)

## DEFINITIONS OF TRANSFER AGREEMENTS

# 2+2

### AGREEMENT

Many American students attend a two-year community college for the first two years of university studies. For students who plan to earn a bachelor's degree, the transition from a two-year college to a four-year institution for the final two years can be quite easy. With a 2+2 Agreement, you can complete an **associate degree at MATC**, then you **enter the four-year institution** you've chosen to earn your bachelor's at, and **enroll at a junior status**.

### PROGRAM-TO-PROGRAM

### AGREEMENT

Wisconsin's technical colleges have developed more than 1,100 program-to-program transfer agreements with four-year public and private colleges and universities. This makes the associate degree increasingly accepted and widely used to access bachelor degree programs. **If you know what degree** you want to pursue, check out MATC's program-to-program agreements at [matc.edu](http://matc.edu). From Accounting to Welding Technology, MATC works with a variety of four-year colleges/universities to offer these agreements.

#25  
UNIVERSITY  
IN THE WORLD  
*Center for World University Rankings*

129  
MAJORS

#1  
RATED  
FACULTY  
*Rate My Professors*

WISCONSIN  
UNIVERSITY OF WISCONSIN-MADISON

# TRANSFER TO UW-MADISON

[go.wisc.edu/transferring](http://go.wisc.edu/transferring)

OVER  
1,000  
STUDENT  
ORGANIZATIONS

71  
CERTIFICATES



Here's why your next step should  
Be at Parkside.

- ☑ Affordable
- ☑ Excellent Grad Placement Rates
- ☑ Great Location

Check us out for yourself!  
www.uwp.edu • 262-595-2355

**Be at Parkside.**

UNIVERSITY OF WISCONSIN **PARKSIDE**

# DISCOVER

## UNIVERSAL TRANSFER

### AGREEMENT

The Universal Credit Transfer Agreement (UCTA) provides a set of courses that are transferable between all University of Wisconsin System institutions and Wisconsin Technical College System districts, and typically satisfy general education or general degree requirements. This allows you to **transfer 30 credits of specified core** general-education courses into any University of Wisconsin college or university.

Learn more at [wisconsin.edu/transfer](http://wisconsin.edu/transfer).

Examples of courses that satisfy a general education or general degree requirement at the receiving UW or WTCS institution include:

- ▲ College Algebra & Trigonometry With Applications
- ▲ General Biology
- ▲ General Chemistry
- ▲ General Physics I
- ▲ Introduction to American Government
- ▲ Economics
- ▲ Introduction to Sociology
- ▲ Introduction to Psychology
- ▲ Speech

#### Specialized Transfer Agreements

MATC has transfer programs that offer “guaranteed” admission to UW-Madison, UW-Milwaukee, UW-Parkside and Marquette University. These programs are described on page 23. If you are interested in these options, meet with your MATC advisor to learn more.

## GUARANTEED ADMISSION



### UW-Madison TRANSFER CONTRACT PROGRAM

Your path toward a bachelor's degree from UW-Madison just got easier to navigate. You can complete your first two years at MATC, and transfer to UW-Madison where you'll earn your four-year degree. Liberal Arts and Sciences degree students who achieve a 3.0 GPA and complete 54 MATC credits are guaranteed admission to the university; Liberal Arts and Sciences degree students who earn a 2.6 – 2.9 GPA will receive special consideration for UW-Madison admission.

Admission to UW-Madison does not guarantee admission to a specific academic major or program; some UW-Madison programs have a competitive application process.

#### Minimum requirements for UW-Madison admission:

- One year of high school-level algebra
- One year of high school-level geometry
- College preparatory math (One year of high school-level courses or one college-level course)
- Single foreign language (Two high school years or two college semesters minimum. You are strongly encouraged to have three years of foreign language prior to transferring.)
- Selected MATC Liberal Arts Transfer Program courses meeting the university's curricular requirements



### UW-Parkside TRANSFER CONTRACT PROGRAM

Just a mile from Lake Michigan between Kenosha and Racine, the University of Wisconsin-Parkside can be your four-year college destination. Complete your first two years at MATC and transfer to UW-Parkside. MATC Liberal Arts and Sciences degree students who achieve a 3.0 GPA and complete 54 MATC credits are guaranteed admission to the university. Students who earn a 2.6 – 2.9 GPA will receive special consideration for UW-Parkside admission.

#### Minimum requirements for UW-Parkside admission:

- One year of high school-level algebra
- One year of high school-level geometry
- College preparatory math (One year high school-level or one college-level course)
- Single foreign language (Two high school years or two college semesters minimum. You are strongly encouraged to have three years of foreign language prior to transferring.)
- Selected MATC Liberal Arts Transfer Program courses meeting UW-Parkside curricular requirements



### UW-Milwaukee TRANSFER CONTRACT PROGRAM

Two options for MATC students:

**Guaranteed Transfer** – Complete up to 54 Liberal Arts and Sciences credits at MATC, with a GPA of 2.75 or better, while satisfying UWM's general education requirements. Declare for this program before completing your first 30 credits, and UWM guarantees your admission and accepts all MATC credits.

**UWM College Connection** – Students enrolled in MATC's Liberal Arts and Sciences program can earn a bachelor's degree online in specific majors from UWM without needing to attend the UWM campus.

#### Also, you need to know:

- Admission to UWM does not guarantee admission to a specific program or major; some UWM programs have a competitive application process
- To be eligible for guaranteed UWM admission, you must finish your MATC studies within five academic years
- Students earning MATC's Associate in Arts or Associate in Science degree will meet UWM's general education requirements



MARQUETTE  
UNIVERSITY

### Marquette TRANSFER CONTRACT PROGRAM

Marquette University offers a Guaranteed Admission Agreement for MATC students to complete their bachelor's degree. Track your degree progress by working with your advisor at MATC and Marquette University.

#### Academic Requirements

- Complete a minimum of 24 transferable credit hours in 200-level courses
- Maintain a cumulative GPA of 2.75 (with no grade less than a C)
- Enroll in a Marquette University degree program within three years of enrolling in the Guaranteed Admission program

Note: Students may transfer up to 60 credits toward a bachelor's degree.



## UW OSHKOSH ONLINE DEGREE PROGRAMS



**RICH CHURCH**  
churchr@uwosh.edu  
(920) 420-2189

*Earn your Bachelor's degree in as little as two years.*

*Aviation Management*

*Criminal Justice*

*Fire & Emergency Response Management*

*Human Services Leadership*

*Leadership & Organizational Studies*

*Liberal Studies*

Visit us online at [uwosh.edu/go/malc-transfer](http://uwosh.edu/go/malc-transfer)

COMPLETE YOUR BACHELOR'S DEGREE ONLINE WITH UW OSHKOSH



[uwosh.edu/go/online](http://uwosh.edu/go/online)

# DISCOVER



## Articulation Agreements Streamline Bachelor's Degree Pathway for Associate Degree Holders

The Wisconsin Association of Independent Colleges and Universities (WAICU) has a long history of working together with public institutions of higher education in the state. An example of cross-sector collaborations are the numerous articulation agreements between Wisconsin Technical College System (WTCS) institutions and WAICU members.

**The agreements formally outline pathways** for associate degree-holders to transfer the credits they have earned in WTCS to a WAICU member. In other words, WTCS graduates may apply the coursework they have already completed at a technical college toward a bachelor's degree program at a four-year college or university.

Between 2011 and 2016, **more than 10,000 students** transferred from a Wisconsin technical college to a Wisconsin private, nonprofit college or university.

**Articulation agreements show a commitment** in both the public and private, nonprofit sectors of higher education to be student-centered. Providing students with the flexibility to pursue their education at more than one institution enables them to be the decision-makers in what works best for their educational needs.

And as more jobs throughout the state require increasing levels of education, WAICU, WTCS and the University of Wisconsin System continue to work together in meeting workforce needs.

"In an era when the ground is truly shifting beneath our feet in higher education, it's Wisconsin's independent colleges and universities who are our proven, trusted and ready partners on every front," said Dr. Morna Foy, president of WTCS. "While our partnerships are long-standing, it never ceases to amaze me how dynamic they are when it comes to doing what's best for students."



# WEBSITES TO CHECK OUT

[www.wisconsin.edu/transfer/agreements-campus](http://www.wisconsin.edu/transfer/agreements-campus)

Great online resource for exploring Wisconsin Technology College System (WTCS) and the University of Wisconsin System (UWS) transfer agreements.

[www.wistechcolleges.org/preparing-college/transfer-options](http://www.wistechcolleges.org/preparing-college/transfer-options)

Transfer agreements between all the University of Wisconsin universities and all the Wisconsin technical colleges are explained at this website.

[www.wisconsin.edu/transfer](http://www.wisconsin.edu/transfer)

The Transfer Information System (TIS) is a statewide initiative to improve transfer for Wisconsin students. The website, maintained by the University of Wisconsin System, helps show how your credits transfer and offers additional information.

<https://collegecost.ed.gov/scorecard>

College Scorecards in the U.S. Department of Education's College Affordability and Transparency Center help you search for a college that is a good fit, including researching value and affordability.

<https://www.collegetransfer.net>

This website includes information tailored to two-year college students, adult learners and veterans to assist with comparing colleges and universities for a smooth transfer.

<https://www.transferology.com>

Transferology is a fast and free way to explore your transfer options, whether you're planning to transfer for your bachelor's or you just need to take a course at a different college.

<https://bigfuture.collegeboard.org/compare-colleges>

<https://bigfuture.collegeboard.org/majors-careers>

These are online resources to compare colleges and universities across the country, and to research majors and careers.

## WISCONSIN LUTHERAN COLLEGE

COLLEGE OF ADULT & GRADUATE STUDIES



**60%**  
job promotion  
rate for  
students



**\$50,000+**  
salary for 75%  
of our graduates



**100%**  
satisfaction  
rate

# TRANSFER

...your MATC associate degree and complete your bachelor's degree in as little as two years, taking classes online or one night per week.

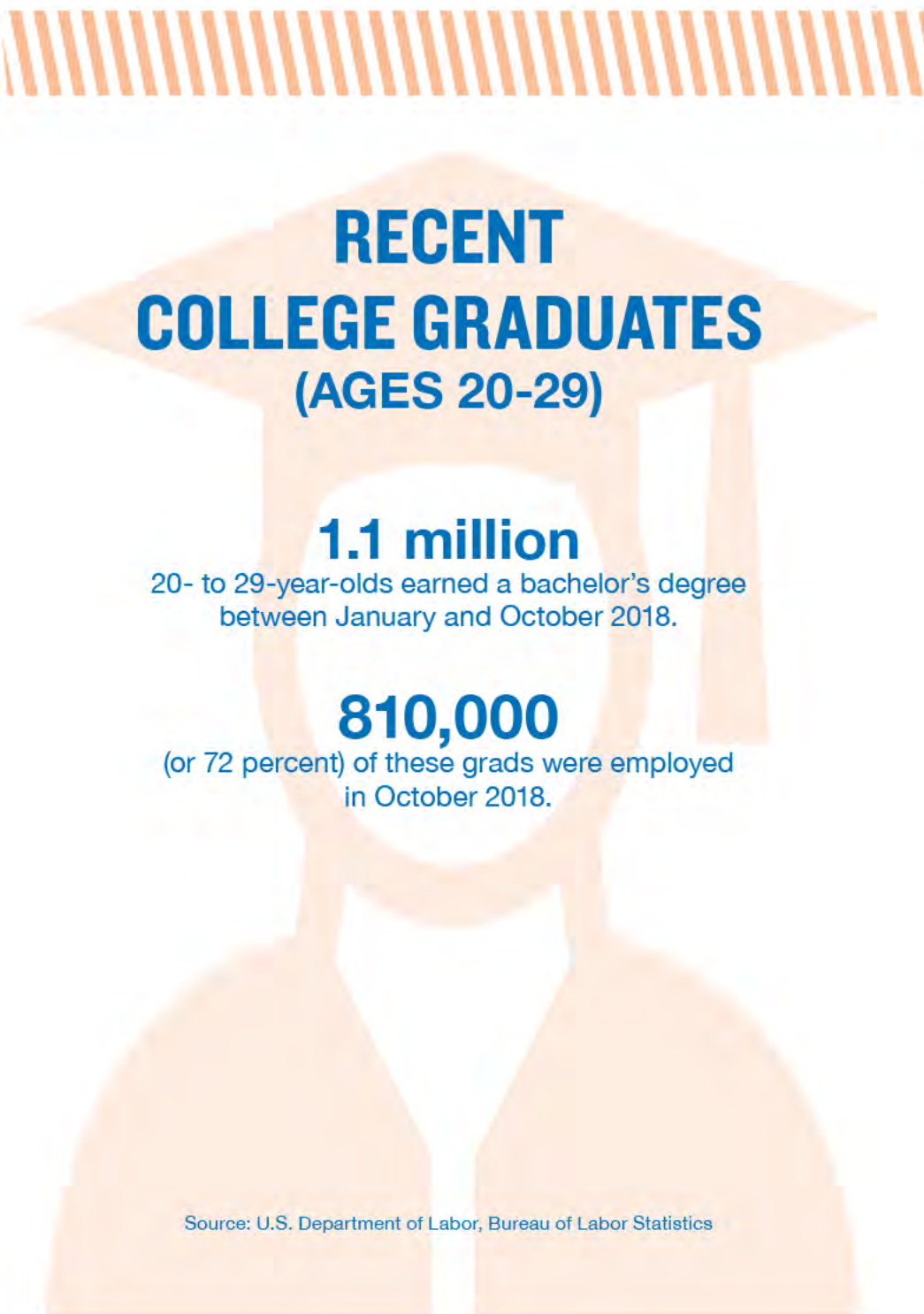
**WLC.EDU/ADULT — 414.443.8731**



# GET READY TO TRANSFER.

At Alverno, a distinctive education with personalized support and lasting connections will get you ready for a fulfilling career.

Start planning your transfer to Alverno College today. Visit [alverno.edu/transferhere](https://alverno.edu/transferhere) to upload your unofficial transcripts for an evaluation of how your credits transfer or call us at 414-382-6100.



## RECENT COLLEGE GRADUATES (AGES 20-29)

**1.1 million**

20- to 29-year-olds earned a bachelor's degree between January and October 2018.

**810,000**

(or 72 percent) of these grads were employed in October 2018.

Source: U.S. Department of Labor, Bureau of Labor Statistics

# PLAN

Many students attend MATC to complete general studies courses and then transfer to a state or private college or university to complete a bachelor's degree.

**MATC has made transferring a fairly simple process** because we have established transfer partnerships with many institutions.

It can seem overwhelming to enroll in a college or university and finance your education. But have no fear – from transfer credits to financial aid, **MATC IS HERE FOR YOU** every step of the way.

When it comes to planning your transfer, there is no time like the present.

## Start Planning Today!

**Do your best to complete** the following steps as soon as possible. These steps will assist you in planning your transfer.

Remember, the process for transferring out of one school and into another varies at each college or university. **Make sure you are in contact with both schools** – working with an MATC academic advisor AND an admissions counselor at the institution where you plan to transfer.

STEP  
**1**

ASSESS  
YOURSELF

STEP  
**2**

MAKE A LIST OF  
OCCUPATIONS  
TO EXPLORE

STEP  
**3**

CONDUCT  
INFORMATIONAL  
INTERVIEWS

STEP  
**4**

MAKE YOUR  
CAREER  
CHOICE

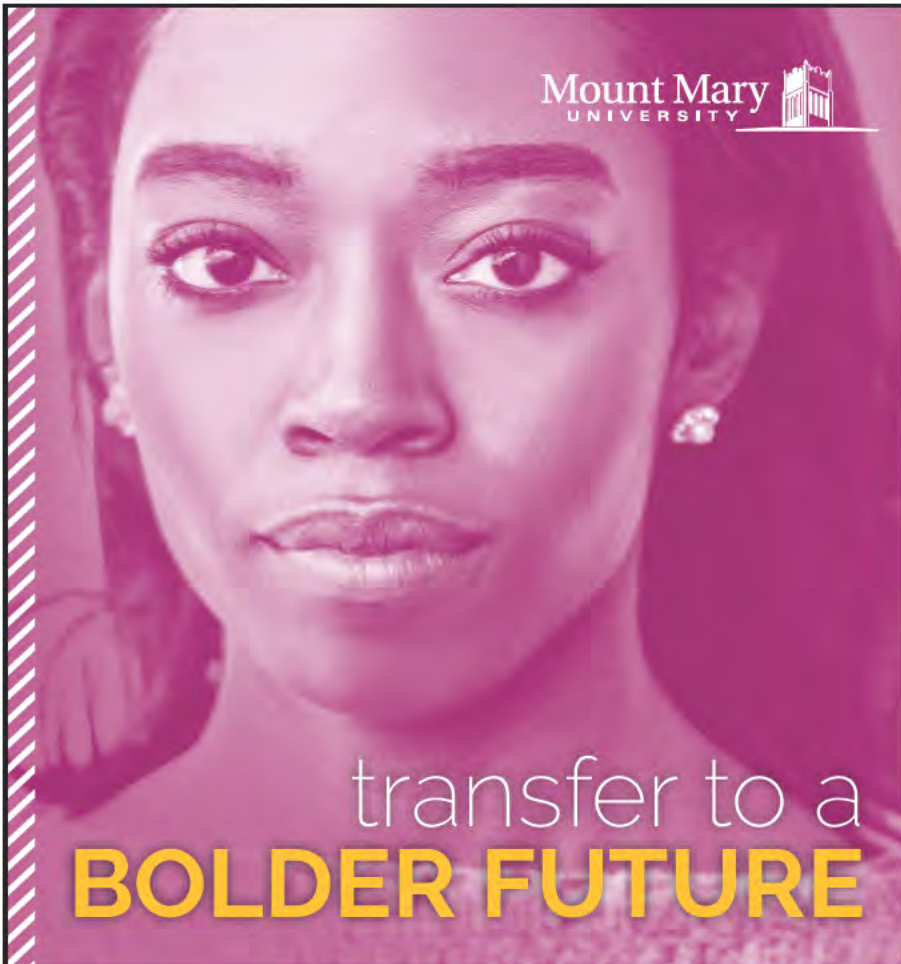
STEP  
**5**

IDENTIFY YOUR  
GOALS

STEP  
**6**

WRITE A  
CAREER  
ACTION PLAN

For more detailed information on each step, see the following pages.



Mount Mary  
UNIVERSITY

transfer to a  
**BOLDER FUTURE**

When you're ready to transfer, we'll be here to help you every step of the way.

Learn how your credits can transfer seamlessly from MATC:  
[mtmary.edu/transferecredits](http://mtmary.edu/transferecredits)

**CHOOSE FROM MORE THAN 30 TRANSFORMATIVE PROGRAMS:**

- |                         |                                  |
|-------------------------|----------------------------------|
| Accounting              | Interior Design                  |
| Studio Art              | Interior Merchandising           |
| Art Therapy             | International Studies            |
| Biology                 | Justice                          |
| Business Administration | Liberal Studies                  |
| Chemistry               | Mathematics                      |
| Communication           | Nursing 1-2-1                    |
| Education               | Philosophy                       |
| English                 | Political Science                |
| Fashion Design          | Psychology                       |
| Fashion Merchandise     | Social Work                      |
| Management              | Sociology                        |
| Food Science            | Spanish                          |
| Graphic Design          | Student-Designed Major           |
| History                 | Theology                         |
| Human Biology           | Undecided (Compass Year Program) |

# PLAN

## STEP 1

### ASSESS YOURSELF

Before you can choose the right career, you must learn about yourself. Your **values, interests, soft skills, and aptitudes**, plus your **personality type**, make some occupations a good fit for you and other careers completely inappropriate.

Use **self-assessment tools**, often called **career tests**, to gather information about your traits. Some people choose to work with a career counselor or other career development professionals who can help them navigate this process.



## STEP 2

### MAKE A LIST OF OCCUPATIONS TO EXPLORE

After Step 1, create a list of occupations that are a good fit. Your self-assessment indicated they are a good fit for you based on several of your traits, so definitely consider them. Title the list “Occupations to Explore.”

Now, find any occupations on your list that appeal to you. These might be careers you know something about or they could be professions that you don’t know much about. Stay open-minded; you might learn something unexpected.

## STEP 3

### CONDUCT INFORMATIONAL INTERVIEWS

Now that you have only a few occupations left on your list, start doing more in-depth research. Arrange to meet with people who work in the occupations in which you are interested. They can provide firsthand knowledge about the careers on your list.

## STEP 4

### MAKE YOUR CAREER CHOICE

Finally, after doing all your research, you are probably ready to make your choice. Pick the occupation that you think will bring you the most satisfaction based on all the information you have gathered. Realize that you are allowed do-overs if you change your mind about your choice at any point in your life. Many people change their careers at least a few times.

## STEP 5

### IDENTIFY YOUR GOALS

Once you make a career decision, identify your long- and short-term goals. Long-term goals take about three to five years to reach. You can usually fulfill a short-term goal in six months to three years. A **long-term** goal would be completing your education and training. **Short-term goals** include applying to college and doing internships.

# STEP 6

## WRITE A CAREER ACTION PLAN

Last step. Put together a career action plan, a written document that lays out all the steps you need to take to reach your goals. Think of it as a roadmap that will take you from point A to point B. Write down all your short- and long-term goals and the steps you will have to take to reach each one. Include any anticipated barriers that could get in the way of achieving your goals and the ways you can overcome them.

## A NURSE LIKE YOU DESERVES SOME CREDIT

EARN 77 PROFICIENCY CREDITS  
TOWARDS COMPLETING YOUR  
BSN DEGREE

You've worked hard to become an extraordinary nurse. At Chamberlain, licensed RNs with an associate degree in nursing are awarded 77 proficiency credits toward completing a BSN degree. Combined with qualifying CCAP and transfer credits, our students start our program with an average of 87 credits, reducing the number of courses needed to graduate so you can start your future a little faster.

*MATC graduates receive 10% tuition savings and may qualify for military rates, scholarships & grants.*



CONTACT US TO LEARN MORE.

Kim Wankowski  
kwankowski@chamberlain.edu  
414.640.1512

CHAMBERLAIN  
UNIVERSITY

CHAMBERLAIN.EDU

Programs:  
BSN\* | RN to BSN | MSN\* | MSN-FNP | DNP\*

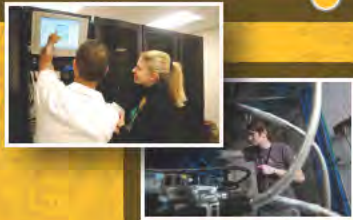
\*CCNE accredits the BSN, MSN and DNP programs only.  
Program/program option availability varies by state/location. The baccalaureate degree in nursing program, master's degree in nursing program, and Doctor of Nursing Practice program at Chamberlain University are accredited by the Commission on Collegiate Nursing Education, 655 K Street NW, Suite 750, Washington DC 20001, 202.887.6791. For the most updated accreditation information, visit [chamberlain.edu/accreditation](http://chamberlain.edu/accreditation). Unresolved complaints may be reported to the Illinois Board of Higher Education through the online complaint system <http://complaints.ibe.org/> or by mail to 1N, Old State Capitol Plaza, Suite 333, Springfield, IL 62701-1377. For the most updated approvals by state information, visit [chamberlain.edu/stateapprovals](http://chamberlain.edu/stateapprovals). ©2019 Chamberlain University LLC. All rights reserved. 031519J01



School of **INFORMATION**STUDIES

**Associate degree holders in:**

- IT Computer Support Specialist
- IT Information Systems Security Specialist
- IT Mobile Applications Developer
- IT Network Specialist



transfer to the **Information Science & Technology (IST)** program at UW-Milwaukee with an average of 60 credits\*

\*Contact an advisor today to learn how your credits may transfer!

**Create Your Degree in IST!**

<http://www.ist.uwm.edu>



# PARTNERS

MATC's transfer partners include Wisconsin's public universities, local private colleges and universities, and four-year colleges and universities in other states. **Check out the maps on pages 34 and 35.**

**UNIVERSITY OF WISCONSIN SYSTEM** serves more than 170,000 students each year statewide. The UW System includes 13 four-year universities, and they are transfer partners with MATC.

### PRIVATE SCHOOLS

MATC currently has about two dozen active articulation agreements with private schools, both statewide and nationally.

### UNIVERSITIES AND COLLEGES IN OTHER STATES

Are you looking for a change in location when you take your next step? MATC has transfer agreements with schools in several states, including Arizona, Illinois and Pennsylvania.

### GROWING OUR PARTNERSHIPS

MATC is continually in conversations with four-year institutions to seek the best transfer opportunities for our students.

### Four-Year Campus Admission Contacts

If you're thinking about transferring into a college or university, there are probably a million questions running through your head. The process can appear complicated. But many admissions specialists, especially our four-year partners, are eager to help you through the transition. Listed here is information for the colleges/universities that have transfer agreements with MATC.



INSTITUTION	WEBSITE	PHONE
Alverno College	alverno.edu/transferhere	414-382-6100
Capella University	capella.edu/admissions	888-906-5035
Cardinal Stritch University	stritch.edu/MATC_Transfer	800-347-8822
Carroll University	carrollu.edu	800-CARROLL
Chamberlain University/College of Nursing	chamberlain.edu	414-640-1512
Colorado State University	csuglobal.edu	800-920-6723
Columbia College Chicago	colum.edu	312-369-1000
Concordia University Wisconsin	cuw.edu	262-243-4300
Drexel University	drexel.edu/admissions	215-895-2400
Franklin University	franklin.edu/admissions	877-341-6300
Grand Canyon University	gcu.edu/admissions/requirements.php	855-GCU-LOPE
Lakeland University	lakeland.edu	414-476-6565
Marian University	marianuniversity.edu	920-923-8726
Marquette University	marquette.edu/transfer	414-288-1614
Milwaukee Institute of Art & Design	miad.edu/admissions	888-749-MIAD
Milwaukee School of Engineering	msoe.edu	800-332-6763
Mount Mary University	mtmary.edu/transfer	414-930-3000
Northland College	northland.edu/apply	715-682-1699
Ottawa University	ottawa.edu/admissions	877-868-8292
Purdue University Global	go.purdueglobal.edu	844-787-3834
Rasmussen College	rasmussen.edu/admissions	800-621-7440
Silver Lake College of the Holy Family	sl.edu	800-236-4752 ext.175
Southern Illinois University	siu.edu/admissions	618-536-4405
Springfield College	springfield.edu	414-276-2300
Upper Iowa University	uiu.edu/mwke-learn	414-475-4848
Wisconsin Lutheran College	wlc.edu/adult	414-443-8731

UNIVERSITY OF WISCONSIN SYSTEM		
UW-Eau Claire	uwec.edu	715-836-5415
UW-Green Bay	uwgb.edu/admissions	920-465-2111
UW-La Crosse	uwlax.edu	608-785-8939
UW-Madison	go.wisc.edu/transferring	608-262-3961
UW-Milwaukee	uwm.edu/visituwm	414-877-5568
UW-Oshkosh	uwosh.edu/go/matc-transfer	920-420-2189
UW-Parkside	uwp.edu	262-595-2355
UW-Platteville	uwplatt.edu	608-342-1125
UW-River Falls	uwrf.edu	715-425-3500
UW-Stevens Point	uwsp.edu	715-346-2441
UW-Stout	uwstout.edu	715-232-1232
UW-Superior	uwsuper.edu	715-394-8230
UW-Whitewater	uww.edu	262-472-1440



## COMPLETE YOUR DEGREE AT MILWAUKEE SCHOOL OF ENGINEERING

MSOE accepts MATC transfer credits so you can jump right into your program. Small classes allow you to connect with industry-experienced professionals who provide you with the skillsets and local business connections you need to hit the ground running after graduation. Visit us at [msoe.edu](http://msoe.edu).

# PARTNERS



## WISCONSIN PUBLIC

UW-Eau Claire  
 UW-Green Bay  
 UW-La Crosse  
 UW-Madison  
 UW-Milwaukee  
 UW-Oshkosh  
 UW-Parkside  
 UW-Platteville  
 UW-River Falls  
 UW-Stevens Point  
 UW-Stout  
 UW-Superior  
 UW-Whitewater

## WISCONSIN PRIVATE

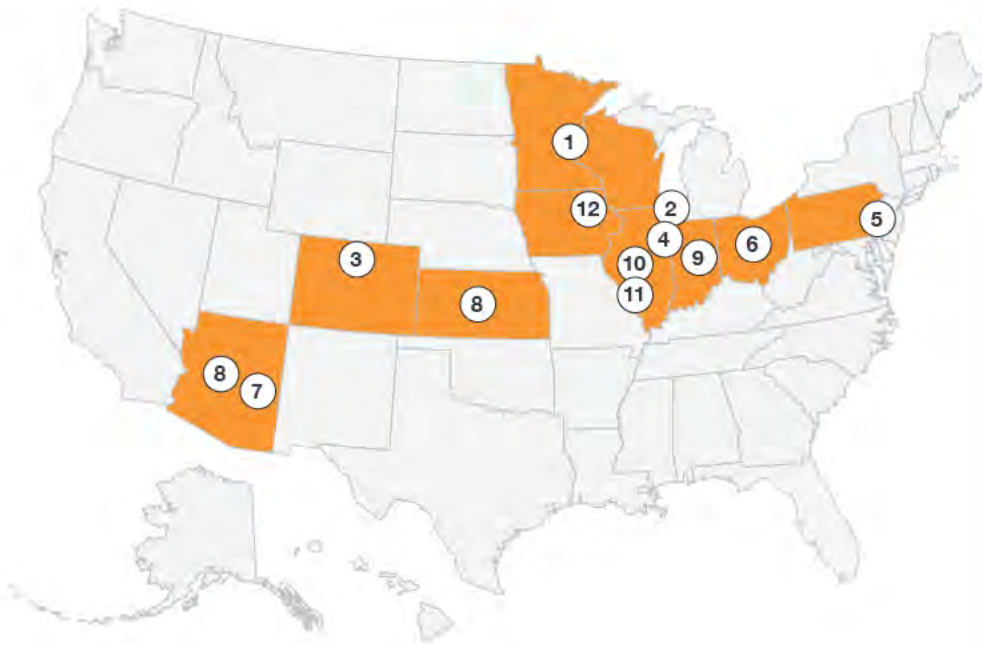
Marian University (Fond du Lac)  
 Northland College (Ashland)

## WISCONSIN PRIVATE – GREEN BAY AREA

Rasmussen College (Green Bay)  
 Silver Lake College of the Holy Family (Manitowoc)

## WISCONSIN PRIVATE – MILWAUKEE AREA

Alverno College (Milwaukee)  
 Cardinal Stritch University (Milwaukee)  
 Carroll University (Waukesha)  
 Concordia University Wisconsin (Mequon)  
 Lakeland University (Plymouth and Milwaukee)  
 Marquette University (Milwaukee)  
 Milwaukee Institute of Art & Design (Milwaukee)  
 Milwaukee School of Engineering (Milwaukee)  
 Mount Mary University (Milwaukee)  
 Ottawa University (Brookfield, plus online)  
 Springfield College (Milwaukee)  
 Upper Iowa University (Milwaukee)  
 Wisconsin Lutheran College (Milwaukee)



### NATIONAL PRIVATE AND ONLINE

1. Capella University (Minnesota)
2. Chamberlain University | College of Nursing (Illinois – 3 Chicagoland campuses, plus 19 locations across 15 states)
3. Colorado State University - Global Campus (Colorado)
4. Columbia College Chicago (Illinois)
5. Drexel University (Pennsylvania)
6. Franklin University (Ohio)
7. Grand Canyon University (Arizona)
8. Ottawa University (Arizona, Kansas)\*
9. Purdue University Global (Indiana)
10. Rasmussen College (Illinois)\*
11. Southern Illinois University-Carbondale (Illinois)
12. Upper Iowa University (Iowa)\*

\* Also has Wisconsin campus.



## TRANSFERRING TO UWM IS YOUR NEXT, BEST CAREER MOVE



**TRANSFER** your MATC liberal arts credits easily and affordably.



**UWM OFFERS** quality and opportunity:

- 94 bachelor's programs
- 2019 Princeton Review "Best Midwestern" university ranking.
- Rated one of the nation's top 131 research universities by Carnegie Classification of Institutions of Higher Education.



**UWM IS LOCATED** in the career capital of Wisconsin – more than 1,700 companies host UWM students as interns and recruit UWM graduates.

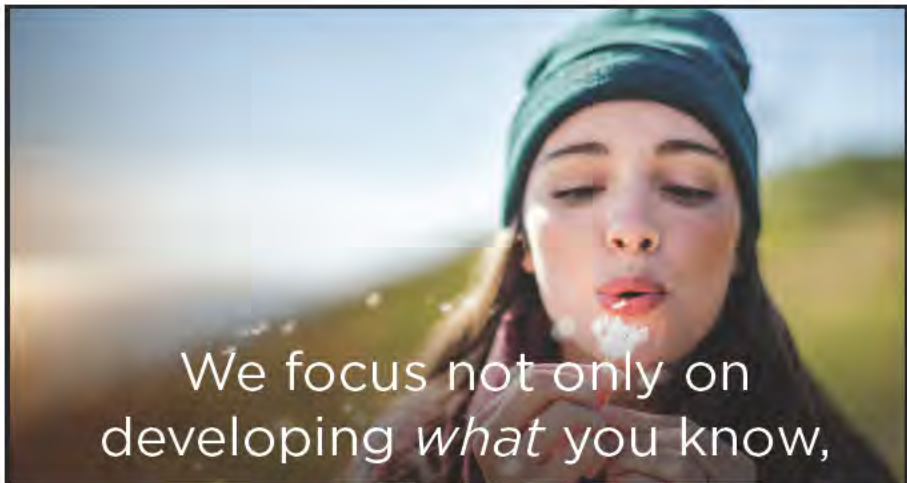
**YOU'LL JOIN** a powerful alumni network – 75 percent of UWM alumni live and work in Wisconsin.

### START YOUR UWM JOURNEY TODAY

Explore opportunities to visit the campus: [uwm.edu/visituwm](http://uwm.edu/visituwm)

- Transfer Tuesday
- See Milwaukee Campus Tours
- Transfer Visit Day

Connect with a transfer specialist who will help you stay on track with a transfer plan for your intended UWM major. Contact Joel Buschmann at [buschma2@uwm.edu](mailto:buschma2@uwm.edu), 414-877-5568 at UWM or 414-297-6295 at MATC.



We focus not only on developing *what you know*,

**BUT WHO YOU ARE AND WHO YOU WERE MADE TO BE.**

TRANSFER UP TO 80 CREDITS!

**TRADITIONAL PROGRAMS** (daytime)

- Smaller classes; more personal attention
- High-value, Christ-centered education
- 70+ majors; endless possibilities
- Community of lifelong connections

**ACCELERATED PROGRAMS** (evening/online)

- In-person classes meet one night per week for 6 weeks
- Courses start every 6 or 8 weeks
- Flexible and supportive online community
- Books included in tuition for some programs

**CENTER LOCATIONS**

**Mequon**  
(main campus)  
262.243.4411

**Kenosha**  
262.697.8260

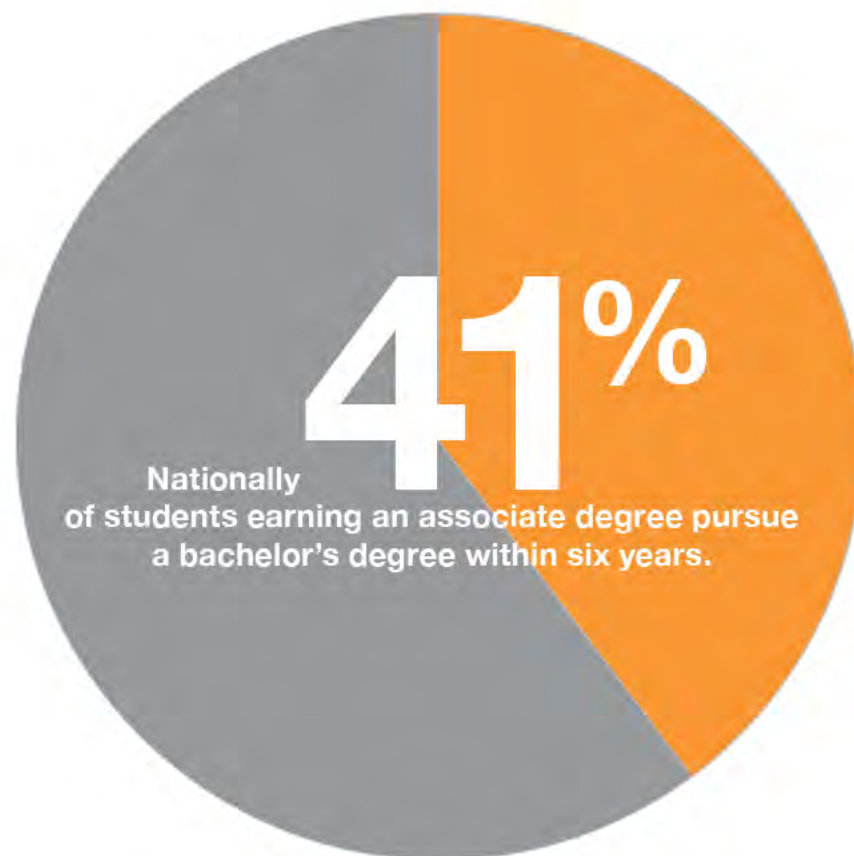
**Miller Park Way**  
414.647.2523

**Milwaukee Midtown**  
414.444.0734

**Waukesha**  
262.522.0990



# PARTNERS



Source: National Center for Education Statistics

# One Final Request: Your MATC Transcript

Transferring credits can be a headache – for everyone, including you! Transferring from one college to another college costs money and time, so it's important that you take your time, investigate where the best fit will be for you – academically and socially – and then begin the admissions process. The four-year school will review your MATC transcript to decide which credits are accepted.

Before you transfer schools, it's important you settle your entire bill at MATC – and we mean “paid in full.” MATC will not release your transcript to the college you want to transfer to until the bill is paid. And colleges/ universities will not admit you without an “official” transcript sent directly from the registrar's office.

Once you have made a decision on the four-year institution you would like to attend, you will need to request your FINAL transcript from MATC. For details, see [matc.edu/student/currentstudent/trscript.cfm](http://matc.edu/student/currentstudent/trscript.cfm).

Make an appointment to speak with an admissions advisor at the four-year institution to make sure credits you have earned to date at MATC can transfer. In a lot of cases, especially if it is one of MATC's transfer programs, they do. However, it is always a good idea to save the syllabus from every class that you took. This way you can show your new advisor what you studied in your courses.





# PARTICIPATING SCHOOLS



## ALVERNO COLLEGE

### Earn your bachelor's at Alverno College

Are you looking for a more individualized education? The opportunity to form lasting connections with faculty and peers? A learning environment that will give you the skills to excel?

If so, Alverno College is your destination.

*Small class sizes + individualized learning:* Alverno is small by design. With 25 or fewer students in any of your classes, you'll get personal attention from professors dedicated to your success.

*Why we go beyond grades:* Employers don't hand out grades, so we don't either. You'll receive detailed feedback on your coursework and an action plan on how to make it better.

*The power of a women's college:* Not sure if a women's college is right for you? Consider this: Students and alumni say our supportive environment empowers them to find their voices and achieve their goals.

*Transferring made easy:* We work with you to ensure you get credit for the courses you've already taken, getting you that much closer to a bachelor's degree.

*Scholarships:* Transfer students can receive up to \$11,000 a year in merit-based aid. We also offer a \$1,500 annual scholarship to Phi Theta Kappa members.

"Alverno has been preparing me to become the professional I aspire to be since the moment I transferred here," said Amanda Bruening, class of 2018. "The entirety of my education has molded me into a well-rounded individual."

Visit [alverno.edu/transferhere](http://alverno.edu/transferhere) to get started.

### ENROLLMENT

Undergraduate: 1,200

### STUDENT:FACULTY RATIO

10:1

### CAMPUS LOCATION

Jackson Park neighborhood on Milwaukee's south side

### ADMISSIONS PROCESS

Visit [alverno.edu/transferhere](http://alverno.edu/transferhere) to learn more and to upload your transcripts for review

### TOP MAJORS

Nursing, Social Work, Education, Business, Psychology, Music Therapy, Art Therapy, Biology, Chemistry, Environmental Science, Mathematics, Communication, Women's and Gender Studies

## CARDINAL STRITCH UNIVERSITY

### Focused on your success

At Cardinal Stritch University, we are focused on your success. Our dedicated staff will work with you to ensure the seamless transfer of credits you earned at MATC. Exclusive transfer-student scholarships are available.

Students, families, alumni, employers, partners and civic leaders consider Stritch an excellent choice for studying the arts and sciences, business, education, leadership, nursing and health sciences. The university provides comprehensive liberal arts and professional education. Programs are designed to help students develop new skills, gain career-related experience and build professional networks. These academic programs prepare students of all ages, faiths, races and socioeconomic backgrounds to succeed in the communities where they live, work, serve and lead.

At Stritch, the elements of scholarship and learning — discovery, application, integration and teaching — are embraced by faculty, staff and students. Dedicated faculty and staff work closely with students to transform their lives and prepare them to successfully serve and lead in a highly diverse and ever-changing world.

Our close-knit community is centered on the Franciscan Values of creating a caring community, showing compassion, reverencing all of creation and making peace. A vibrant campus life offers shared and meaningful experiences through a vast array of student clubs and organizations, diverse activities, intercollegiate athletics, community service projects and leadership opportunities.

More than 38,000 Stritch alumni are recognized worldwide for their leadership roles in businesses, healthcare organizations, corporations, educational institutions, entrepreneurial ventures and nonprofit organizations. Responsive to the needs of their communities, Stritch graduates are critical thinkers, ethical decision-makers and lifelong learners.

- Maximum credits that transfer from a two-year college: 70+
- Scholarships: up to \$14,000
- Academic programs: 40+

Visit our campus located just north of downtown Milwaukee and meet with an admissions staff member who will help you embark on your Stritch experience.

### ENROLLMENT

Undergraduate: 1,457

Total Enrollment: 2,148

### STUDENT:FACULTY RATIO

10:1

### TOP MAJORS

Nursing and Health Sciences (RN to BSN and Respiratory Therapy degree completion), Education and Teaching, Business Administration, Performing Arts

## CARROLL UNIVERSITY

### Be a “Pioneer” – discover Carroll University

Looking for a better fit? With our no-hassle transfer approach, you'll get recognition for the work you've already done and finish strong at Carroll University. We're ready to provide the support and guidance you need to ensure a smooth transition from MATC. This includes answering your questions about the transfer process, financial aid, and ensuring you receive the attention you need to maximize existing credits and complete your degree.

At Carroll, we're here to help you figure out how we can deliver on the college experience you've dreamed of — while making it work for your financial and academic needs. So, apply now! It's free and easy. Once we've received your application and transcript, an admission counselor will evaluate how your credits will transfer to Carroll University.

Expenses top of mind? You are not alone. Carroll University annually awards more than \$40 million in financial aid. As a transfer student you may be eligible to receive one of our merit-based scholarships. Talent scholarships also are available in art, photography and music. We'll help you navigate the aid process and also explore opportunities to apply for scholarships outside of Carroll.

To learn more, visit [carrollu.edu](http://carrollu.edu) or call 1-800-CARROLL.

### ENROLLMENT

Undergraduate: 2,690

### TUITION AND FEES

\$31,918

### STUDENT:FACULTY RATIO

17:1

### AVERAGE CLASS SIZE

20.5

### TOP MAJORS

Nursing, Exercise Science/Physical Therapy, Psychology, Education, Business

# PARTICIPATING SCHOOLS

## CHAMBERLAIN UNIVERSITY | COLLEGE OF NURSING

### Committed to academic excellence, student success and lifetime learning

Chamberlain University is home to the largest nursing college in the country with 22 campuses across 15 states and programs online. Whether you are aspiring to become a nurse or looking to take that next step in your career, Chamberlain offers a range of degree programs, options and certificates to help you achieve your goal.

Chamberlain aims to enhance learning across the curriculum in a tangible way through extensive support. This means students have access to comprehensive support tools and customized plans for mastering course content throughout their degree program in order to serve as extraordinary nurses who will transform healthcare.

#### Degree Programs

- 3-Year BSN (campus)
- RN to BSN Online Completion Option (complete in as few as three semesters)
- MSN, MSN-FNP, DNP (online)

#### Transfer and Proficiency Credits Accepted

- RNs receive 77 proficiency credits for your previous educational experience
- Additional qualifying credits may be accepted

#### Reduced Tuition

- MATC graduates receive 10% tuition savings

#### Streamlined Admissions

- An advisor acts as a single-point-of contact to pull your transcripts, advise on financial aid options and design your personal plan of study

#### ENROLLMENT

Undergraduate: 22,194

#### CAMPUS LOCATIONS

3 Chicagoland campuses and 19 other locations across 15 states, and online

#### TOP MAJORS

Nursing

## CONCORDIA UNIVERSITY WISCONSIN

### Shaping the leaders of tomorrow

Academic performance is critical for any educational institution, and Concordia University Wisconsin (CUW) develops students in mind, body and spirit in preparation as the leaders of tomorrow. At CUW, students experience personal attention, rigorous academics, real world opportunities and enriching activities; all in a Christ-centered environment. Well beyond graduation, they are prepared with excellence for their vocation, supported as they advance in their careers, encouraged to always be curious, and developed for service leadership wherever their journey takes them.

The CUW experience begins in the classroom. Academic performance is a critical measure of any institution's success story. With pass rates for professional certifications and licenses well above national averages, small class sizes and deeply caring faculty, CUW offers a high value, personal education for each student. The academic foundation, whatever area of study, is rooted in a rigorous liberal arts curriculum. Undergraduate students can select from over 70 majors structured under six schools.

Schedule an appointment with our admission counselors at our main campus, or one of our off-campus centers, to learn more about the application process, how your MATC credits will transfer, and the many exciting opportunities available as a CUW student. The investment you put in now will set you up for a lifetime of success as a leader in life.

For further details on any of Concordia's programs, call our Office of Enrollment at 262-243-4300, or visit [www.cuw.edu](http://www.cuw.edu).

#### ENROLLMENT

Undergraduate (Mequon campus only): 2,800

#### TUITION AND FEES

Traditional: tuition \$30,060; fees \$292

Accelerated: \$512 per credit

#### STUDENT:FACULTY RATIO

12:1

#### AVERAGE CLASS SIZE

16

#### CAMPUS LOCATIONS

Mequon (main campus)

Wisconsin Centers: Appleton, Beloit, Green Bay, Kenosha, Madison, Miller Park Way, Milwaukee Midtown and Waukesha; online courses and degrees also available

#### ADMISSIONS PROCESS

Rolling admissions, apply at [www.cuw.edu/apply](http://www.cuw.edu/apply)

#### TOP MAJORS

Accounting, Business Management, Health Care Management, Human Resources, BSN Completion



## LAKELAND UNIVERSITY

### Lakeland's Milwaukee Center offers a variety of innovative ways for students to earn a bachelor's degree

Lakeland and MATC have created a new partnership that expands MATC's Promise program and provides a pathway to a bachelor's degree for students in the Milwaukee area who never thought that goal was possible.

- Lakeland has established a significant scholarship fund that will extend the Promise to high school graduates who enroll at MATC through the Promise program, as well as Promise-eligible students who earn their MATC associate degree and plan to attend LU as a full-time student. For many of the graduates, the scholarship will cover all tuition after federal and state financial grant aid has been applied.
- Lakeland's BlendEd® classes allow students to decide weekly to attend class in person or online. Classes are held at LU's Milwaukee Center at 9000 West Chester Street, just north of I-94 near the zoo interchange. No other adult education program offers the convenience of BlendEd® – so it's easy for Lakeland students to keep working and advance in their careers while earning additional education.
- Lakeland's student-designed option allows students to earn academic credit for projects they're doing at work, cutting down the time to graduation.

To learn more, call 414-476-6565 or email [Milwaukee@Lakeland.edu](mailto:Milwaukee@Lakeland.edu).

### ENROLLMENT

Undergraduate: approximately 2,300

### TUITION

\$520 per credit; \$1,560 per class

### CLASS SIZE

Typical class size is 12 to 20 students

### ADMISSIONS PROCESS

60 to 72 credits in transfer with associate degree, one-on-one advising

Experiential learning: Earn academic credit for current or future work projects without stepping foot in the classroom

### TOP MAJORS

Accounting, Business, Psychology, Criminal Justice, Computer Science, Graphic Design Completion, BSN Completion

## MARIAN UNIVERSITY

### 100% online adult undergraduate programs: It's Marian University's Path for your success

It's a big step, but we've worked to have **MPath** help make it an easy one. Your life goals, your career aspirations, your desired success – our MPath Online Undergraduate Programs were developed to give a more personalized, flexible and convenient education to those managing a busy life that includes work obligations and family commitments. Ninety-nine percent of students receive financial aid.

Through MPath, students can advance their education by utilizing a seven-week accelerated timeline. MPath online students progress through their chosen program following a clear path of success, with six possible start times to choose from each year.

Degree programs to choose from include:

- Accounting
- Health Care Administration-BBA
- Homeland Security
- Management
- Organizational Communication (hybrid)
- Criminal Justice
- Health Care Administration-BS
- Interdisciplinary Studies
- Marketing
- Psychology

As well as Completion Programs in:

- Radiologic Technology
- RN to BSN

MPath Undergraduate Programs offer:

- 10% discount for MATC transfers
- The creation of a custom completion plan
- The ability to pause and progress as needed
- Engaging learning experiences based on individual needs
- Individualized communication with faculty and peers to build a professional network

As an independent learner, you'll benefit from our student-centered approach that supports and recognizes where you come from and what you need to move forward.

Student experiences:

- Students engage in internships, co-ops, field study, clinicals and research
- 40 student-led clubs and organizations
- 30% of students participate in athletics

Apply to Marian today at [MarianUniversity.edu/Apply](http://MarianUniversity.edu/Apply).

### ENROLLMENT

Undergraduate: 1,400

### TUITION AND FEES

\$27,400 (average)

### STUDENT: FACULTY RATIO

11:1

### AVERAGE CLASS SIZE

13

### CAMPUS LOCATION

Fond du Lac and online

### ADMISSIONS PROCESS

[MarianUniversity.edu/Transfer](http://MarianUniversity.edu/Transfer)

### TOP MAJORS

Nursing, Social Work, Education, Exercise and Sports Science, Radiologic Technology, Diagnostic Medical Sonography, in addition to online Psychology and online completion programs for RN to BSN and Radiologic Technology

# PARTICIPATING SCHOOLS

## MARQUETTE UNIVERSITY

### Find your place in the world at Marquette

It's no wonder that hundreds of students each year choose to transfer to Marquette University. A Marquette education inspires you to ask new questions, seek new answers and demand more of yourself. We are recognized for our nationally known programs, powerhouse faculty and Catholic, Jesuit tradition that emphasizes ethics and lifelong values. For 138 years, we have inspired students to "Be The Difference" in their professional and personal lives.

Transferring to Marquette from MATC is easy. A guaranteed admission agreement allows qualifying students to plan their transfer in advance to nearly any Marquette undergraduate program. MATC students following the liberal arts transfer track can complete an associate degree while also earning many transferable credits toward a Marquette bachelor's degree.

A Marquette education is worth the investment, and we're proud to be ranked 49th in "Best Value Schools" by *U.S. News & World Report*. Additionally, based on U.S. Department of Education College Scorecard data, Marquette was ranked the sixth best college nationally and the best in Wisconsin for job placement.

We'll support you throughout your time at Marquette, help you make the transition and get the classes you need.

To learn more or arrange a campus visit, go to [Marquette.edu/transfer](http://Marquette.edu/transfer).

### ENROLLMENT

Undergraduate: 8,435 (2018)

### TUITION AND FEES

\$43,350

### MINORITY %

28% (2018 undergraduate)

### ADMISSIONS PROCESS

Malik Farr, 414-288-1614, [malik.farr@marquette.edu](mailto:malik.farr@marquette.edu)

### TOP MAJORS

Biomedical Sciences, Nursing, Finance, Mechanical Engineering, Psychology, Marketing, Exercise Physiology, Accounting, Biomechanics

## MILWAUKEE SCHOOL OF ENGINEERING (MSOE)

### Extraordinary together

MSOE is a community of dreamers, thinkers, makers and doers, a small university dedicated to achieving big things. As a transfer student from MATC, you will be able to jump right in to any of our undergraduate majors and continue working toward your bachelor's degree. Along the way, you will enjoy the hallmarks of an MSOE education, which include our applications oriented lectures and labs, personal attention from faculty and practical experiences that help to prepare you for a successful career and more.

Since 1903, we've been an academic institution intrinsically tied to the real world – a confluence of business knowledge, work ethic, and an enduring desire to know more. A small university dedicated to achieving big things. We are a tight-knit group of like-minded individuals – professors with years of industry experience who come to mold the eager and determined; students who pursue their passions with tenacity and resilience. Together, we unriddle the impossible and reinvent the way things are done.

Contact our admissions office at [transfer@msoe.edu](mailto:transfer@msoe.edu) for more information and for guidance in maximizing the transfer of your MATC credits.

### ENROLLMENT

Undergraduate: 2,596

### TUITION

\$40,407

### STUDENT:FACULTY RATIO

16:1

### AVERAGE CLASS SIZE

Class: 20

Lab: 11

### CAMPUS LOCATION

Downtown Milwaukee

### ADMISSIONS PROCESS

Rolling application deadline; [msoe.edu/admissions-aid](http://msoe.edu/admissions-aid)

### TOP MAJORS

Engineering, Computer Science, Nursing, Business, User Experience

## MOUNT MARY UNIVERSITY

### Choose boldly

Mount Mary is shaping the next generation of bold women who will enrich our world with their creativity, compassion and skill. Our graduates are confidently equipped to be creative in ways that future employers – and the wider world – need them to be.

As a transfer student, we'll guide you through the entire process to make your transition as easy as possible.

With more than 30 undergraduate and nine graduate programs, you can earn your degree with the program that's just right for you. Some of our top-rated programs include Fashion Design, Social Work, Business, Food Science, Nursing, Occupational Therapy and Education. To view a full list, go to [mtmary.edu/majors](http://mtmary.edu/majors).

We also know affordability is key to making the switch, and we're committed to making Mount Mary a quality, private education that you can afford. That's why we offer a scholarship or reduced tuition to 100% of our full-time, incoming transfer students, up to \$15,500 per year. See [mtmary.edu/scholarships](http://mtmary.edu/scholarships).

Plus, our generous transfer credit policy means all your hard work won't go to waste. To learn how your credits can transfer seamlessly from MATC, go to [mtmary.edu/transfercredits](http://mtmary.edu/transfercredits).

Ready to take the next step toward a bold future? Apply for free online at [mtmary.edu/transfer](http://mtmary.edu/transfer).

### ENROLLMENT

Undergraduate: 726

### TUITION

\$15,275 per semester for full-time undergraduate students  
100% of full-time transfer students receive scholarship or reduced tuition

### STUDENT:FACULTY RATIO

12:1

### AVERAGE CLASS SIZE

15

### CAMPUS LOCATION

2900 North Menomonee River Parkway, Milwaukee

### ADMISSIONS PROCESS

Rolling admissions, apply for free at [mtmary.edu/transfer](http://mtmary.edu/transfer)

### TOP MAJORS

Fashion Design, Social Work, Business, Nursing, Occupational Therapy

## UNIVERSITY OF WISCONSIN-GREEN BAY

### Earn your bachelor's degree online or on campus at UW-Green Bay

The University of Wisconsin-Green Bay is proud to offer a number of high-quality bachelor's degrees fully online – with options to accommodate even the busiest lifestyle. Bachelor's degrees available fully online at UW-Green Bay include: Accounting, Business, Psychology, Nursing, Health Information Management/Technology, Organizational Leadership and Public Administration.

MATC graduates with an applied associate degree who pursue their degree in Organizational Leadership are guaranteed to transfer in a minimum of 60 credits to UW-Green Bay. Start as a junior and pursue your degree either full time or part time. Select an Area of Emphasis to focus your degree in areas such as Emergency Management, Nonprofit Leadership, Environmental Science, Leadership in Public Service and more.

Prefer an on-campus experience? Transfer to UW-Green Bay's campus and choose from on-campus programs in a wide array of majors and minors. Experience the university's excellent facilities, including housing, recreation spaces and natural beauty.

Meet with UW-Green Bay admissions counselor, Arlene Torres, right here on the MATC campus to learn how UW-Green Bay can help you to achieve your educational goals and dreams. To schedule an appointment, please call her at 414-333-2895 or email at [torresa@uwgb.edu](mailto:torresa@uwgb.edu). Learn more about UW-Green Bay at [www.uwgb.edu/admissions](http://www.uwgb.edu/admissions).

### ENROLLMENT

Undergraduate: 6,830

Total enrollment: 7,251

### TUITION AND FEES (WISCONSIN RESIDENT)

\$7,878 (per year; Fall 2019)

### CLASS SIZE

Classes with fewer than 20 students: 49%

Classes with fewer than 40 students: 88%

### CAMPUS LOCATIONS

Green Bay (main campus), Marinette, Manitowoc, Sheboygan

### ADMISSIONS PROCESS

<https://www.uwgb.edu/apply>

<https://www.uwgb.edu/transfer>

Arlene Torres, 414-333-2895; [uwgb@uwgb.edu](mailto:uwgb@uwgb.edu), [www.uwgb.edu/online](http://www.uwgb.edu/online)

### TOP MAJORS

Business Administration, Psychology, Organizational Leadership, Human Biology, Nursing

# PARTICIPATING SCHOOLS

## UNIVERSITY OF WISCONSIN-MADISON

### Come explore our dynamic campus

From Memorial Union Terrace to Bascom Hill, UW-Madison is a beautiful and engaging place with an active student body. Explore all our visit offerings through Visit Bucky at [visitbucky.wisc.edu](http://visitbucky.wisc.edu).

Undergraduate admission to the University of Wisconsin-Madison is competitive and selective, and our professional admissions counselors review applications using a holistic process designed to help us find remarkable students who will add to the legacy of UW-Madison.

Students can choose from 128 majors and 71 certificate programs in eight undergraduate schools and colleges. UW-Madison faculty and staff provide a world-class learning experience, and students have access to thousands of classes in nearly any subject.

A transfer student is anyone who has attended another college or university after graduating from high school and wishes to enroll in an undergraduate degree program at UW-Madison. In order to be eligible for transfer admission, a student must have completed at least 24 transferable semester hours of college-level work. AP, A-Level, IB and CLEP cannot be used toward the 24 transferable credit requirement. Transfer students can apply online via the UW System Application at [apply.wisconsin.edu](http://apply.wisconsin.edu).

### ENROLLMENT

Undergraduate: 30,360

### TUITION AND FEES (WISCONSIN RESIDENT)

\$10,556

### STUDENT:FACULTY RATIO

20:1

### AVERAGE CLASS SIZE

31

### CAMPUS LOCATION

Madison (main campus)

### ADMISSIONS PROCESS

[go.wisc.edu/transfer\\_admissions](http://go.wisc.edu/transfer_admissions)

### TOP MAJORS

Biology/Biological Sciences, Business, Engineering, Computer Science, Psychology, Foreign Languages, Nursing, Education

## UNIVERSITY OF WISCONSIN-MILWAUKEE

### UWM offers MATC students a streamlined path to a four-year degree

When Dianna Herron decided she wanted to go back to school for a four-year degree, she was disappointed to learn her associate's credits wouldn't transfer to most bachelor's programs she was considering. Then she discovered that the education program at MATC had an established transfer agreement with the University of Wisconsin-Milwaukee.

"When I heard they were going to transfer credits, I thought, 'Let's do it, UWM,'" she said. Herron achieved her goal, and last spring she began a master's program in English education, also at UW-Milwaukee.

UWM partnered with MATC to give dedicated students like Herron the perfect steppingstone to a four-year degree and beyond. Here's how it works: After completing the Panther Tracks Agreement, MATC students work with their MATC/UWM transfer advisor to create a program plan specific to their major of interest. If students maintain a 2.0 GPA or higher, the Panther Tracks Agreement provides guaranteed admission to UWM.

From there, transfer students enjoy all the benefits of attending UWM, from being part of one of the top research universities in the nation to the many internship and career opportunities that come with an alumni network of 189,000 strong.

- 1,000+ undergraduate research opportunities offered per year
- 35+ countries where UWM students study abroad
- 1,300+ businesses hosted UWM interns in 2017-18

### ENROLLMENT

Undergraduate: 20,278

### STUDENT:FACULTY RATIO

18:1

### NUMBER OF BACHELOR'S DEGREE PROGRAMS

94

## UNIVERSITY OF WISCONSIN-MILWAUKEE

### SCHOOL OF INFORMATION STUDIES

#### Access your full potential with a degree in Information Science and Technology

If you're looking for a high-paying, in-demand career in information technology, get on the fast track at the UWM School of Information Studies (SOIS).

Our Information Science and Technology (IST) degree will give you the skills and connections you need to upgrade your career. It's designed to maximize the value of your MATC credits so that you're not retaking courses. The entire program can be completed online, in person, or both. It's the only bachelor's degree of its kind in the state of Wisconsin.

The IST program starts with a small number of core courses. After that, you and your academic advisor customize your career path with specialized electives and internships. You'll be diving deep into a skill set that's personally tailored to your intended career.

Whether it's information security, network architecture, or front-end web development, you'll be prepared for success with real job experiences and professional contacts. Our award-winning faculty are drawn from leaders in the field, and our academic and career services advisors work with you one-on-one, every step of the way. Many of our students receive job offers before graduating. If you want to unlock the possibilities of a career in information technology, start with SOIS.

#### ENROLLMENT

Undergraduate (UWM-SOIS): 580

#### TUITION (WISCONSIN RESIDENT)

Onsite: \$9,588 per year (12-18 credits per semester), more information at [uwm.edu/cost-aid](http://uwm.edu/cost-aid)

Online: \$392 per credit

#### STUDENT:FACULTY RATIO

19:1

#### ADMISSIONS PROCESS

[soisinfo@uwm.edu](mailto:soisinfo@uwm.edu), 414-229-4707, [uwm.edu/admission](http://uwm.edu/admission)

Apply online: [apply.wisconsin.edu](http://apply.wisconsin.edu)

## UNIVERSITY OF WISCONSIN-OSHKOSH

#### Earn your bachelor's degree online in as little as two years

Transfer the courses that you've already taken for your MATC applied associate degree in addition to a block of up to 45 credits for your technical training. Most students end up with roughly the same number of credits after transfer. Online programs from UW Oshkosh are accelerated to provide the flexibility you need. Classes start in September, late October, February, late March and June.

Focus your studies with one of these majors:

- Aviation Management
- Criminal Justice
- Fire and Emergency Response Management
  - Fire Services Leadership Emphasis (or)
  - Emergency Management Emphasis
- Human Services Leadership
- Leadership and Organizational Studies

Coursework focuses on the skills employers demand from their top leaders and managers. You've earned your technical degree, now discover your leadership and management skills to expand your future career options. Boost your potential with a bachelor's degree from UW Oshkosh!

A dedicated advisor, based right here in Southeast Wisconsin, will assist you every step of the way from start to finish. Rich Church has regularly scheduled office hours at MATC's Downtown Milwaukee and Oak Creek campuses. Visit [uwosh.edu/go/matc-transfer](http://uwosh.edu/go/matc-transfer) to see how your degree transfers into our Bachelor of Applied Studies programs. Download a transfer guide and contact a UW Oshkosh advisor to learn more: Rich Church, [churchr@uwosh.edu](mailto:churchr@uwosh.edu), 920-420-2189.

#### ENROLLMENT

Undergraduate: 10,734

#### TUITION (WISCONSIN RESIDENT)

\$7,656 (on campus, full time, per year); online is \$360 per credit

#### STUDENT:FACULTY RATIO

18:1

#### CAMPUS LOCATIONS

Oshkosh (main campus), Fond du Lac, Fox Valley (Menasha) and online

#### ADMISSIONS PROCESS

UW System application, \$50 non-refundable application fee, official transcripts from all schools attended. Official high school transcripts if you've only attended MATC.

#### TOP MAJORS

On campus: Nursing, Business, Biology, Elementary Education, Psychology

Online: Fire and Emergency Response Management, Leadership and Organizational Studies, Human Services Leadership, Criminal Justice, Aviation Management

# PARTICIPATING SCHOOLS

## UNIVERSITY OF WISCONSIN-PARKSIDE

### Program fits transfer students' future plans

You have one degree, come to UW-Parkside and complete your bachelor's degree. Dedicated transfer counselors guide you through the process and ensure that your previous coursework and experience translate into the maximum credit possible.

The UW-Parkside/MATC 2+2 Business Management Articulation Agreement allows MATC business management students to complete their bachelor's degree in Accounting, Business Management, Management Information Systems or Marketing.

At Parkside, students are our focus. You'll be part of a community where others truly want you to succeed, and you will work with faculty members that enjoy teaching and making a difference in the lives of their students. Our unique location provides ample internship opportunities throughout southeastern Wisconsin and northeastern Illinois.

Top programs with high job placement rates include Business (95% placement), Computer Science (99% placement), Criminal Justice (#1 program in Wisconsin), Pre-Health Programs (89% placement) and Theatre Arts (92% placement).

UW-Parkside/MATC 2+2 graduate Alma Lomeli said, "At Parkside I further developed the skills, abilities and knowledge that have helped me succeed in life."

### ENROLLMENT

Undergraduate: 4,325  
Graduate: 235

### TUITION AND FEES (WISCONSIN RESIDENT)

\$3,684 per semester

### MINORITY %

36%

### STUDENT:FACULTY RATIO

19:1

### CAMPUS LOCATION

Kenosha

### ADMISSIONS PROCESS

Contact Jenna Balek or Seth Lane, [admissions@uwp.edu](mailto:admissions@uwp.edu). Submit official high school/GED and college transcripts; 2.0 cumulative GPA.

### TOP MAJORS

Business, Computer Science, Criminal Justice, Pre-Health Programs, Theatre Arts

## UNIVERSITY OF WISCONSIN-PLATTEVILLE

### Take the next step toward your brightest future

At the University of Wisconsin-Platteville, you'll find programs that fit your current interests and career goals. All classes are taught by professors with hands-on projects, undergraduate research, service learning, internships and practical experiences that enhance your résumé and lead to future success.

A wide array of undergraduate and graduate programs are offered through on-campus, hybrid and online formats. Depending on your academic area, you might work with cadavers in the human anatomy class, investigate a mock crime scene at the Forensic Investigation Crime Scene House, explore best practices for sustainable agriculture at the Pioneer Farm or contribute to nanotechnology-based cancer research.

UW-Platteville has consistently been named a best value college by Payscale and ranked #1 on annual ROI in Wisconsin – this means you'll spend less on your degree while earning more return on your investment.

Ready to learn more about continuing your education at UW-Platteville?

- Go to [uwplatt.edu/transfer](http://uwplatt.edu/transfer) to find detailed information about how your degree transfers to UW-Platteville.
- Schedule a visit to tour campus, meet with a transfer advisor and talk with an academic representative from your area of interest.
- View the complete admission guidelines and steps to apply on our website, then go to [apply.wisconsin.edu](http://apply.wisconsin.edu) and start your application.

### ENROLLMENT

Undergraduate: 7,170  
Graduate: 809

### TUITION AND FEES (WISCONSIN RESIDENT)

\$7,922

### STUDENT:FACULTY RATIO

20:1

### AVERAGE CLASS SIZE

25

### CAMPUS LOCATION

Platteville (main campus), Baraboo Sauk County, Richland and online

### ADMISSIONS PROCESS

Visit [uwplatt.edu/transfer](http://uwplatt.edu/transfer)  
608-342-1125, 877-UWPLATT, [admit@uwplatt.edu](mailto:admit@uwplatt.edu)

### TOP MAJORS

Agriculture, Biology, Business, Criminal Justice, Education, Engineering, Industrial Technology

## UPPER IOWA UNIVERSITY

### Education built for life

Upper Iowa University, founded in 1857, serves over 6,000 students at its residential campus, 25 U.S. Centers, international locations; and through online and self-paced programs.

Students have been attending UIU's Milwaukee Center since 1992, and there are over 5,000 alumni living in the area. The Milwaukee Center is located at 620 South 76th Street, across from State Fair Park; the center is a state-of-the-art facility with classrooms, computer lab and onsite support services. UIU offers flexible class schedules with small classes and has courses available in Elkhorn, Racine and Kenosha.

UIU offers evening, online, and hybrid (onsite/online combined), eight-week sessions and six start dates per year.

Earn a bachelor's degree in Accounting, Business Administration, Criminal Justice, Health Services Administration, Human Services, Information Technology, Management, Marketing, Psychology, Public Administration and more. UIU also offers all the courses and internships required as part of the Social Work Training Certificate Program. In addition, graduate courses in the Master of Business Administration (MBA) and Master of Public Administration (MPA) are offered face-to-face and online. Upper Iowa University is accredited by the Higher Learning Commission and accepts financial aid through various sources.

Contact the Milwaukee Center at 414-475-4848 or email [Milwaukee@uiu.edu](mailto:Milwaukee@uiu.edu).

### ENROLLMENT

Undergraduate: 6,000

### STUDENT:FACULTY RATIO

15:1

### CAMPUS LOCATIONS

Fayette, Iowa (main campus)

Milwaukee, Elkhorn, Racine and 19 more centers in the U.S.

### ADMISSIONS PROCESS

Open enrollment, six sessions per year

Regina Kovnesky, [kovneskyr21@uiu.edu](mailto:kovneskyr21@uiu.edu)

### TOP MAJORS

Business Administration, Accounting, Human Services, Management, Criminal Justice, Psychology, Marketing, Human Resources, Health Service Management, Master of Business Administration, Master of Public Administration, Social Work Training Certificate

## WISCONSIN LUTHERAN COLLEGE

### Flexible, affordable bachelor's degree programs

If you're looking to advance professionally, build your leadership skills, and achieve your bachelor's degree from a nationally ranked college, Wisconsin Lutheran College is the right place for you!

### *A program designed for busy working adults*

WLC offers an impactful learning experience for students seeking a flexible and affordable accelerated bachelor's degree program in either Business Management and Leadership or Health Care Management and Leadership from a highly respected and accredited college. Take classes online or just one night per week! You'll learn from experts who personally live the lessons they teach in their own business or corporate settings every day. An engaging curriculum provides you with skills and competencies that employers list as valued characteristics for their top employees.

### *Our graduates are successful*

Since graduating from MATC in 2012, Sandra, a 2014 graduate of WLC's adult accelerated program, has been promoted four times, noting wage increases of more than \$50,000 per year. She said, "WLC's program gave me the tools I needed. I've also been able to mentor others, influencing them to become stronger leaders themselves." Read more about her story at [www.wlc.edu/sandra](http://www.wlc.edu/sandra).

### *Contact your personal enrollment advisor*

Join students from 35 states and seven countries who also have chosen WLC for their bachelor's degree. Get started today by visiting [WLC.EDU/ADULT](http://WLC.EDU/ADULT) or by contacting your personal enrollment advisor at 414-443-8731.

### ENROLLMENT

Undergraduate: 1,050

### TUITION, FEES AND BOOKS

\$21,675 for Adult Accelerated program; includes tuition and books

### STUDENT:FACULTY RATIO

12:1

### CAMPUS LOCATION

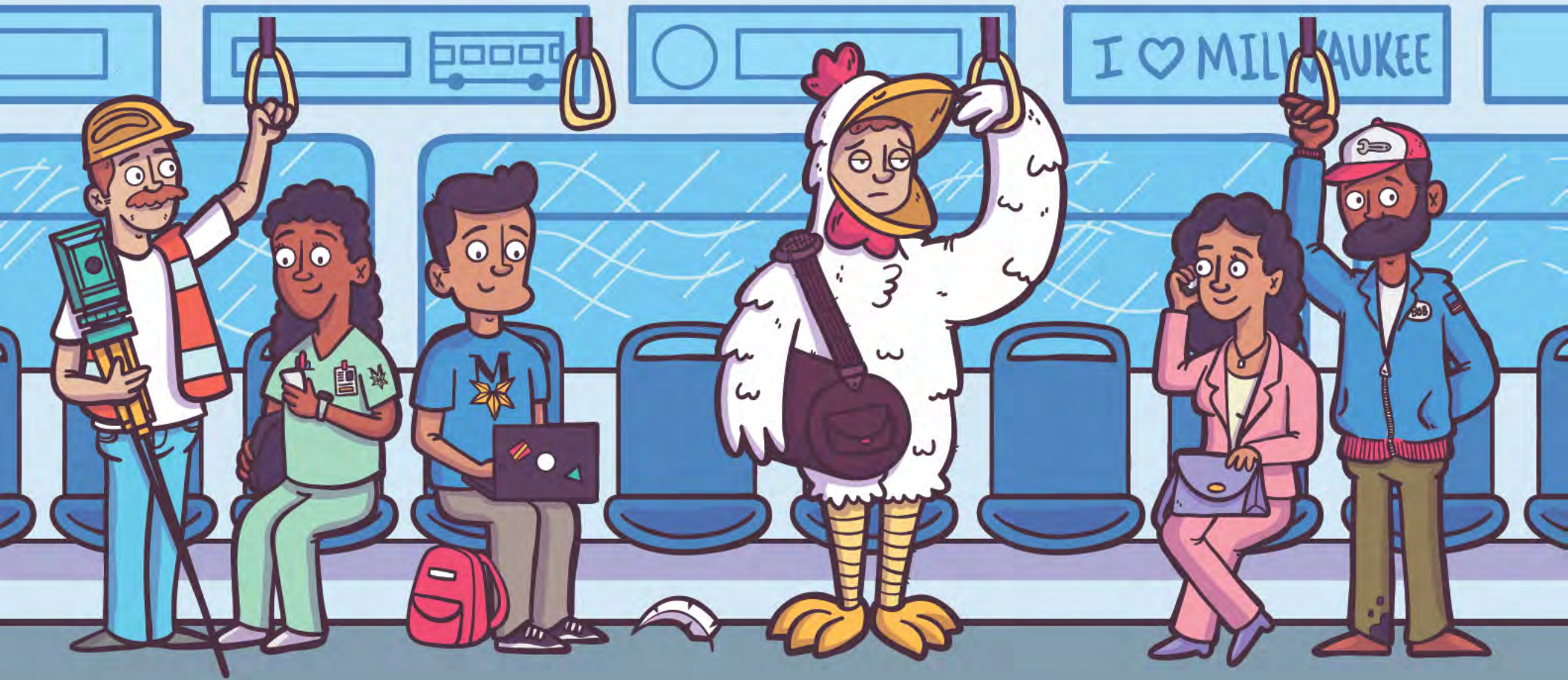
Milwaukee and online

### ADMISSIONS PROCESS

Contact Trey Cochran, [trey.cochran@wlc.edu](mailto:trey.cochran@wlc.edu), 414-443-8731; apply online at [wlc.edu/adult](http://wlc.edu/adult)

### TOP MAJORS

Adult Accelerated Program: Business Management and Leadership; Health Care Management and Leadership; see [wlc.edu](http://wlc.edu) for additional majors



# The **ALTERNATIVE** to Dead-End Jobs.

[ProudToBeMATC.com](http://ProudToBeMATC.com)  
(414) 297-MATC | Wisconsin Relay 711



**DOWNTOWN MILWAUKEE**  
700 West State Street

**MEQUON**  
5555 West Highland Road

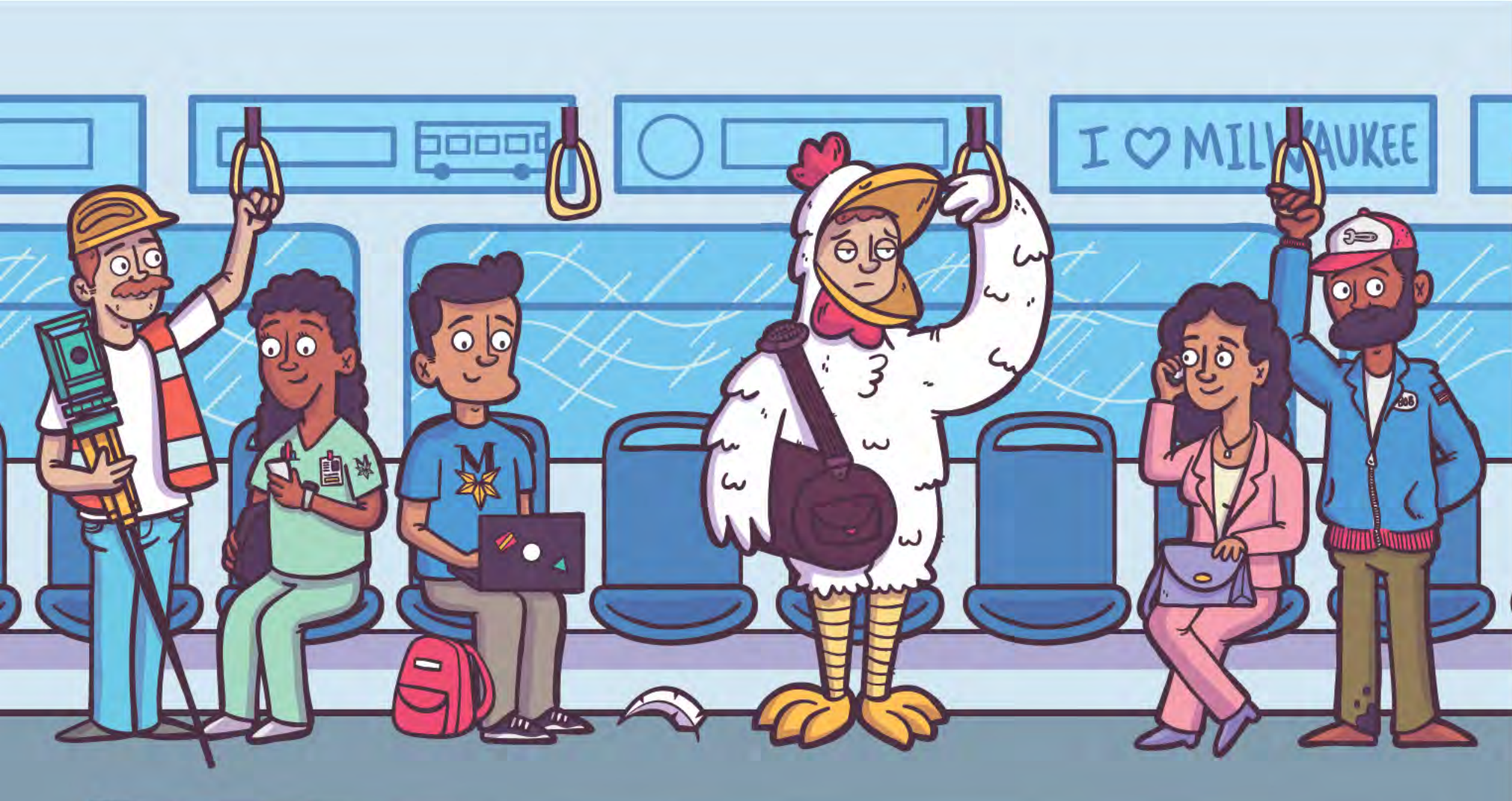
**OAK CREEK**  
6665 South Howell Avenue

**WEST ALLIS**  
1200 South 71st Street

MATC is an Affirmative Action/Equal Opportunity Institution and complies with all requirements of the Americans With Disabilities Act. MATC is accredited by the Higher Learning Commission, Commission on Institutions of Higher Education, the national standard in accrediting colleges and schools for distinction in academics and student services.



QUICK FACTS MATC'S TRANSFER PARTNERS																																										
	Alverno College	Capella University	Cardinal Stritch University	Carroll University	Chamberlain University College of Nursing	Colorado State University	Columbia College Chicago	Concordia University Wisconsin	Drexel University	Franklin University	Grand Canyon University	Lakeland University	Marian University	Marquette University	Milwaukee Institute of Art and Design (MIAD)	Milwaukee School of Engineering (MSOE)	Mount Mary University	Northland College	Ottawa University	Purdue University Global	Rasmussen College	Silver Lake College of the Holy Family	Southern Illinois University Carbondale	Springfield College	UW-Eau Claire	UW-Green Bay	UW-La Crosse	UW-Madison	UW-Milwaukee	UW-Oshkosh	UW-Parkside	UW-Platteville	UW-River Falls	UW-Stevens Point	UW-Stout	UW-Superior	UW-Whitewater	Upper Iowa University	Wisconsin Lutheran College			
UNDERGRADUATE ENROLLMENT	1,200	38,802 (26% are Bachelor of Arts students)	1,457	2,690	22,194	25,903		2,800 (Mequon campus)	13,272	3,509	19,000 (on campus), 70,000 (online)	2,300	1,400	8,435	746	2,596	726	635	1,038																							
TUITION (Ask about scholarships, federal grants and other tuition reduction opportunities)		\$424 to \$780 per credit, see capella.edu		\$31,918 with fees (\$9,484 room and board; \$41,402 total)	Costs vary by student depending on individual circumstances	\$11,982 (Colorado resident); \$29,884 (out of state)	\$26,474 (2017-18)	\$30,060; \$292 fees; Accelerated: \$512 per credit	\$1,265 per credit (\$52,002)	Standard: \$398 per credit, plus fees & other charges	\$16,500	\$520 per credit; \$1,560 per class	Average: \$27,400 includes fees	\$43,350	\$35,020	\$40,407	\$30,550	\$36,183	\$250 (active duty military & spouses) to \$499 per undergraduate credit hour	\$371 per quarter hour credit (texts included)	\$10,935 (tuition and fees)	\$27,360	\$13,481 (Illinois resident); \$27,130 (out of state)	\$5,832 plus fees	\$8,812 (Wisconsin resident)	\$7,878 (Wisconsin resident, tuition and fees)	\$9,091 (Wisconsin resident)	\$10,556 (Wisconsin resident, tuition and fees)	\$9,588 (Wisconsin resident)	\$7,656 (Wisconsin resident); online: \$360 per credit	\$7,368 (Wisconsin resident, tuition and fees)	\$7,922 (Wisconsin resident, tuition and fees)	\$7,981 (Wisconsin resident)	\$8,159 (Wisconsin resident)	\$9,395 (Wisconsin resident)	\$8,088 (Wisconsin resident)	\$7,650 (Wisconsin resident)		\$21,675 Adult Accelerated program, includes books			
STUDENT : FACULTY RATIO	10:1	20:1	10:1	17:1	Varies by campus	16:1	14:1	12:1	17:1		19:1	11:1		15:1	16:1	12:1	11:1	18:1	20:1	16:1	7:1	14:1	24:1	22:1		19:1	20:1	18:1	18:1	19:1	20:1	16:1	20:1	15:1	12:1							
AVERAGE CLASS SIZE				20.5		20 to 49		16	under 20		10 to 19	12 to 20	13		under 20	Class: 20 Lab: 11	15	under 20	under 20	Undergrad: 24 Graduate: 16		10	10 to 19	22	27		22	31			25	20	19	22	20	22						
CAMPUS LOCATIONS	Milwaukee	Minneapolis, Minnesota	Milwaukee	Waukesha	Three Chicagoland campuses, plus 19 other locations across 15 states	Fort Collins, Colorado	Chicago, Illinois	Mequon (main), Kenosha, Miller Park Way, Milwaukee Midtown, Waukesha	Philadelphia, Pennsylvania	Columbus, Ohio (main), Indianapolis, Indiana	Phoenix, Arizona	Plymouth (main), Milwaukee	Fond du Lac (main)	Milwaukee	Milwaukee	Milwaukee	Milwaukee	Ashland	Brookfield; residential campuses in Ottawa, Kansas; and Surprise, Arizona	Online	St. Cloud, Minnesota (main), Green Bay, Wausau	Manitowoc (main)	Carbondale, Illinois	Springfield, Massachusetts (main), Milwaukee	Eau Claire	Green Bay (main), on-site advising at MATC	La Crosse	Madison	Milwaukee	Oshkosh (main), Fond du Lac, Fox Valley (Menasha)	Kenosha	Platteville (main), Baraboo Sauk County, Richland	River Falls (St. Croix Valley)	Stevens Point	Menomonie	Superior	Whitewater	Fayette, Iowa (main), Milwaukee, Elkhorn, Racine and 19 more centers in the U.S.	Milwaukee			
ADMISSIONS PROCESS	alverno.edu/transferhere; 414-382-6100	Program enrollment determines admission requirements; 1-844-443-8810	stritch.edu/MATC_transfer	carrollu.edu, 1-800-CARROLL	Rolling application deadline; chamberlain.edu	Utilizes a semester-based academic calendar; colostate.edu	92% acceptance rate; colum.edu	Rolling admissions; apply at: cuw.edu/apply	Rolling application deadline; drexel.edu	Rolling application deadline; franklin.edu	Admission requirements vary depending if on-campus or online student; gcu.edu	60-72 credits transfer with associate degree; lakeland.edu/admissions/transfer-students	marian university.edu/transfer	Contact Malik Farr, 414-288-1614, malik.farr@marquette.edu	Application form, transcripts and portfolio required; miad.edu/admissions	Rolling application deadline; msoe.edu/admissions-aid	Rolling admissions; apply for free at: mtmary.edu/transfer	Rolling application deadline; northland.edu	Rolling admissions, six starts per year; ottawa.edu/apply	Online application and enrollment process, with admissions advisor call as an addition	Rolling admissions; rasmussen.edu/admissions	Rolling application deadline; sl.edu	Preferred application; contact siu.edu/admissions	springfield.edu	Rolling application deadline; uwec.edu	uwgb.edu/transfer; Arlene Torres (located at MATC), uwgb@uwgb.edu	Rolling application deadline; uwlax.edu	go.wisc.edu/transferring	uwm.edu/admission	uwosh.edu/go/matc-transfer	admissions@uwp.edu	uwplatt.edu/transfer, 608-342-1125, 877-UWPLATT, admit@uwplatt.edu	Rolling application deadline; uwrf.edu	Rolling application deadline; uwsuper.edu	Rolling application deadline; uwstout.edu	Rolling application deadline; uwsuper.edu	Rolling application deadline; uww.edu	Open enrollment; six sessions per year; contact Regina Kovnesky, kovneskyr21@uiu.edu	Contact Trey Cochran, troy.cochran@wlc.edu, 414-443-8731; apply at: wlc.edu/adult			
TOP MAJORS	Nursing, Social Work, Education, Business, Psychology, Music Therapy, Art Therapy, Biology, Chemistry	Business, Management & Marketing, Business Administration, Human Resources, Computer & Information Sciences, Health	Nursing and Health Sciences (RN-BSN, Respiratory Therapy degree completion), Education, Business	Nursing, Exercise Science/Physical Therapy, Psychology, Education, Business	Nursing	Veterinary Medicine, Biomedical Sciences; Research: Atmospheric Science, Infectious Diseases, Clean Energy	Cinematography and Video Production, Retail Management, Graphic Design	Accounting, Business Management, Health Care Management, Human Resources, BSN Completion	Biological and Biomedical Sciences; largest private medical school and newest law school	Business, Health, Public Administration, Arts/Sciences, Technology	Nursing	Accounting, Business, Psychology, Criminal Justice, Computer Science, Graphic Design Completion, BSN Completion	Nursing, Social Work, Education, Exercise/Sports Science, Radiologic Technology, Diagnostic Medical Sonography	Biomedical Sciences, Nursing, Finance, Mechanical Engineering, Psychology, Marketing, Exercise Physiology	Communication Design, Illustration, Industrial Design, Interior Architecture and Design, new Studio Practice	Engineering, Computer Science, Nursing, Business, User Experience	Fashion Design, Social Work, Business, Nursing, Occupational Therapy	Natural Resources and Conservation, Biological and Biomedical Sciences, Business Management, Marketing, Education	Nursing (RN-BSN), Health Care Management, Business Administration, Human and Social Services, Psychology, Accounting	Business Administration, Information Technology, Human Services, Psychology, Healthcare, Nursing	Arts and Humanities, Business and Social Sciences, Medicine and Health, Engineering, Science and Technology	Actuarial Science, Human Resources Management, Nursing, Psychology, Early Childhood Education	Education, Business Management, Engineering Technologies, Health	Human Services, Criminal Justice, Early Childhood Education, Substance Use Counseling	Business; Management; Marketing; Health Professions; Parks, Recreation, Leisure, and Fitness Studies	Business Administration (online), Organizational Leadership Studies (online), Psychology (online), Human Biology, Nursing (online)	Biology, Psychology, Exercise and Sport Science, Elementary Education, Management	Biology/Biological Sciences, Business, Engineering, Computer Science, Psychology, Foreign Languages, Nursing, Education	Business Administration, IT, Criminal Justice, Nursing, Engineering, Psychology, Social Work	Nursing, Business, Biology, Fire and Emergency Response Management, Leadership and Organizational Studies, Elementary Education, Psychology	Business, Computer Science, Criminal Justice, Pre-Health Programs, Theatre Arts	Agriculture, Biology, Business, Criminal Justice, Education, Engineering, Industrial Technology	Business, Management, Marketing, Education, Communication, Journalism, Biology and Biomedical Sciences	Wildlife, Fish & Wildlands Sciences, Business, Communication Science and Disorders, Elementary Education	Applied Science, Business Administration, Childhood Education, Engineering, Graphic Design, Hotel/Restaurant and Tourism	Elementary Education, Communication Arts, Business Administration, Biology, Art Therapy	Finance, Accounting, Social Work, Physical Education Teaching and Coaching, Speech Communication and Rhetoric	Business Administration, Accounting, Human Services, Criminal Justice, Psychology, Marketing, Human Resources	Adult Accelerated Program: Business Management and Leadership, Health Care Management and Leadership			



The **ALTERNATIVE** to Dead-End Jobs.

ProudToBeMATC.com  
(414) 297-MATC | Wisconsin Relay 711



**DOWNTOWN MILWAUKEE**  
700 West State Street

**MEQUON**  
5555 West Highland Road

**OAK CREEK**  
6665 South Howell Avenue

**WEST ALLIS**  
1200 South 71st Street

MATC is an Affirmative Action/Equal Opportunity Institution and complies with all requirements of the Americans With Disabilities Act. MATC is accredited by the Higher Learning Commission, Commission on Institutions of Higher Education, the national standard in accrediting colleges and schools for distinction in academics and student services.

# NOTE YOUR OPTIONS

## RESEARCH YOUR TRANSFER OPPORTUNITIES

Inside are important facts about colleges and universities that have transfer agreements with MATC. You also will learn more when you talk with your college representatives. Use this chart to compare the options.

School Name	Contact Name	Maximum MATC Credits that Transfer	Application Deadline/Requirements	Programs or Majors
	Phone/email	Minimum GPA		
School Name	Contact Name	Maximum MATC Credits that Transfer	Application Deadline/Requirements	Programs or Majors
	Phone/email	Minimum GPA		
School Name	Contact Name	Maximum MATC Credits that Transfer	Application Deadline/Requirements	Programs or Majors
	Phone/email	Minimum GPA		
School Name	Contact Name	Maximum MATC Credits that Transfer	Application Deadline/Requirements	Programs or Majors
	Phone/email	Minimum GPA		

# TRANSFER CHART

## COLLEGE/UNIVERSITY COMPARISON GUIDE

